

Datasheet for ABIN1538885  
**anti-ATP5L2 antibody (N-Term)**[Go to Product page](#)

## 1 Image

## Overview

Quantity:	400 µL
Target:	ATP5L2
Binding Specificity:	AA 1-30, N-Term
Reactivity:	Human
Host:	Rabbit
Clonality:	Polyclonal
Application:	Western Blotting (WB)

## Product Details

Immunogen:	This ATP5L2 antibody is generated from rabbits immunized with a KLH conjugated synthetic peptide between 1-30 amino acids from the N-terminal region of human ATP5L2.
Clone:	RB38695
Isotype:	Ig Fraction
Purification:	This antibody is purified through a protein A column, followed by peptide affinity purification.

## Target Details

Target:	ATP5L2
Alternative Name:	ATP5L2 ( <a href="#">ATP5L2 Products</a> )
Background:	Mitochondrial membrane ATP synthase (F(1)F(0) ATP synthase or Complex V) produces ATP from ADP in the presence of a proton gradient across the membrane which is generated by electron transport complexes of the respiratory chain. F-type ATPases consist of two structural

## Target Details

domains, F(1) -containing the extramembraneous catalytic core, and F(0) -containing the membrane proton channel, linked together by a central stalk and a peripheral stalk. During catalysis, ATP synthesis in the catalytic domain of F(1) is coupled via a rotary mechanism of the central stalk subunits to proton translocation. Part of the complex F(0) domain. Minor subunit located with subunit a in the membrane (By similarity).

Molecular Weight: 11037

Gene ID: 267020

NCBI Accession: [NP\\_001159349](#)

UniProt: [Q7Z4Y8](#)

Pathways: [Proton Transport](#), [Ribonucleoside Biosynthetic Process](#)

## Application Details

Application Notes: WB: 1:1000

Restrictions: For Research Use only

## Handling

Format: Liquid

Buffer: Purified polyclonal antibody supplied in PBS with 0.09 % (W/V) sodium azide.

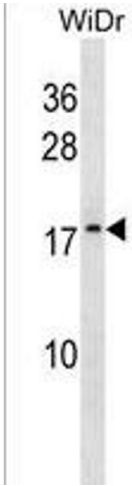
Preservative: Sodium azide

Precaution of Use: This product contains Sodium azide: a POISONOUS AND HAZARDOUS SUBSTANCE which should be handled by trained staff only.

Storage: 4 °C, -20 °C

Storage Comment: ATP5L2 Antibody (N-term) can be refrigerated at 2-8 °C for up to 6 months. For long term storage, keep at -20 °C.

Expiry Date: 6 months



Western Blotting

**Image 1.** ATP5L2 Antibody (N-term) (ABIN1538885 and ABIN2850205) western blot analysis in WiDr cell line lysates (35 µg/lane). This demonstrates the ATP5L2 antibody detected the ATP5L2 protein (arrow).