



[Go to Product page](#)

Datasheet for ABIN1538896

anti-G Antigen 12G antibody (N-Term)

1 Image

Overview

Quantity:	400 µL
Target:	G Antigen 12G (GAGE12G)
Binding Specificity:	AA 1-30, N-Term
Reactivity:	Human
Host:	Rabbit
Clonality:	Polyclonal
Application:	Western Blotting (WB)

Product Details

Immunogen:	This GAGE12F / GAGE12G / GAGE12I antibody is generated from rabbits immunized with a KLH conjugated synthetic peptide between 1-30 amino acids from the N-terminal region of human GAGE12F / GAGE12G / GAGE12I.
Clone:	RB30520
Isotype:	Ig Fraction
Purification:	This antibody is purified through a protein A column, followed by peptide affinity purification.

Target Details

Target:	G Antigen 12G (GAGE12G)
Alternative Name:	GAGE12F / GAGE12G / GAGE12I (GAGE12G Products)
Background:	The function of this protein remains unknown.

Target Details

Molecular Weight:	12978
Gene ID:	100008586
NCBI Accession:	NP_001091875 , NP_001091879 , NP_001468 , NP_066946
UniProt:	P0CL80

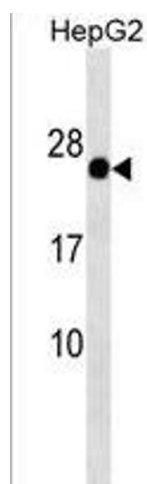
Application Details

Application Notes:	WB: 1:1000
Restrictions:	For Research Use only

Handling

Format:	Liquid
Buffer:	Purified polyclonal antibody supplied in PBS with 0.09 % (W/V) sodium azide.
Preservative:	Sodium azide
Precaution of Use:	This product contains Sodium azide: a POISONOUS AND HAZARDOUS SUBSTANCE which should be handled by trained staff only.
Storage:	4 °C, -20 °C
Storage Comment:	GAGE12F/GAGE12G/GAGE12I Antibody (N-term) can be refrigerated at 2-8 °C for up to 6 months. For long term storage, keep at -20 °C.
Expiry Date:	6 months

Images



Western Blotting

Image 1. GAGE12F/GAGE12G/GAGE12I Antibody (N-term) (ABIN1538896 and ABIN2850520) western blot analysis in HepG2 cell line lysates (35 µg/lane). This demonstrates the GAGE12F/GAGE12G/GAGE12I antibody detected the GAGE12F/GAGE12G/GAGE12I protein (arrow).