

Datasheet for ABIN1538900
anti-KPNA5 antibody (N-Term)[Go to Product page](#)

1 Image

Overview

Quantity:	400 µL
Target:	KPNA5
Binding Specificity:	AA 1-30, N-Term
Reactivity:	Human
Host:	Rabbit
Clonality:	Polyclonal
Conjugate:	This KPNA5 antibody is un-conjugated
Application:	Western Blotting (WB)

Product Details

Immunogen:	This KPNA5 antibody is generated from rabbits immunized with a KLH conjugated synthetic peptide between 1-30 amino acids from the N-terminal region of human KPNA5.
Clone:	RB39370
Isotype:	Ig Fraction
Predicted Reactivity:	Zf, Rat
Purification:	This antibody is purified through a protein A column, followed by peptide affinity purification.

Target Details

Target:	KPNA5
Alternative Name:	KPNA5 (KPNA5 Products)

Target Details

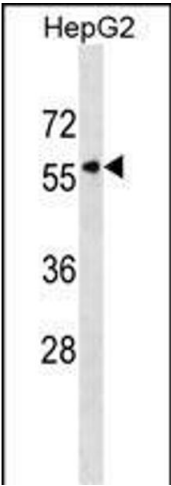
Background:	The transport of molecules between the nucleus and the cytoplasm in eukaryotic cells is mediated by the nuclear pore complex (NPC) which consists of 60-100 proteins and is probably 120 million daltons in molecular size. Small molecules (up to 70 kD) can pass through the nuclear pore by nonselective diffusion, larger molecules are transported by an active process. Most nuclear proteins contain short basic amino acid sequences known as nuclear localization signals (NLSs). KPNA5 protein belongs to the importin alpha protein family and is thought to be involved in NLS-dependent protein import into the nucleus.
Molecular Weight:	60349
Gene ID:	3841
NCBI Accession:	NP_002260
UniProt:	O15131
Pathways:	Protein targeting to Nucleus

Application Details

Application Notes:	WB: 1:1000
Restrictions:	For Research Use only

Handling

Format:	Liquid
Buffer:	Purified polyclonal antibody supplied in PBS with 0.09 % (W/V) sodium azide.
Preservative:	Sodium azide
Precaution of Use:	This product contains Sodium azide: a POISONOUS AND HAZARDOUS SUBSTANCE which should be handled by trained staff only.
Storage:	4 °C,-20 °C
Storage Comment:	KPNA5 Antibody (N-term) can be refrigerated at 2-8 °C for up to 6 months. For long term storage, keep at -20 °C.
Expiry Date:	6 months



Western Blotting

Image 1. KPNA5 Antibody (N-term) (ABIN1538900 and ABIN2838187) western blot analysis in HepG2 cell line lysates (35 µg/lane). This demonstrates the KPNA5 antibody detected the KPNA5 protein (arrow).