



[Go to Product page](#)

## Datasheet for ABIN1538905 **anti-WASH2P antibody (N-Term)**

### 1 Image

#### Overview

Quantity:	400 µL
Target:	WASH2P
Binding Specificity:	AA 1-30, N-Term
Reactivity:	Human
Host:	Rabbit
Clonality:	Polyclonal
Application:	Western Blotting (WB)

#### Product Details

Immunogen:	This WASH2P antibody is generated from rabbits immunized with a KLH conjugated synthetic peptide between 1-30 amino acids from the N-terminal region of human WASH2P.
Clone:	RB30613
Isotype:	Ig Fraction
Predicted Reactivity:	B, M, Rat
Purification:	This antibody is purified through a protein A column, followed by peptide affinity purification.

#### Target Details

Target:	WASH2P
Alternative Name:	WASH2P ( <a href="#">WASH2P Products</a> )
Background:	WASH2P acts as a nucleation-promoting factor at the surface of endosomes, where it recruits

## Target Details

and activates the Arp2/3 complex to induce actin polymerization, playing a key role in the fission of tubules that serve as transport intermediates during endosome sorting (By similarity).

Molecular Weight: 50312

UniProt: [Q6VEQ5](#)

## Application Details

Application Notes: WB: 1:1000

Restrictions: For Research Use only

## Handling

Format: Liquid

Buffer: Purified polyclonal antibody supplied in PBS with 0.09 % (W/V) sodium azide.

Preservative: Sodium azide

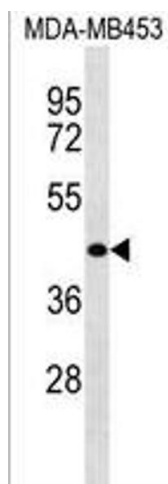
Precaution of Use: This product contains Sodium azide: a POISONOUS AND HAZARDOUS SUBSTANCE which should be handled by trained staff only.

Storage: 4 °C,-20 °C

Storage Comment: WASH2P Antibody (N-term) can be refrigerated at 2-8 °C for up to 6 months. For long term storage, keep at -20 °C.

Expiry Date: 6 months

## Images



### Western Blotting

**Image 1.** WASH2P Antibody (N-term) (ABIN1538905 and ABIN2838272) western blot analysis in MDA-M cell line lysates (35 µg/lane). This demonstrates the WASH2P antibody detected the WASH2P protein (arrow).