



[Go to Product page](#)

Datasheet for ABIN1538914  
**anti-MS4A6A antibody (N-Term)**

1 Image

Overview

Quantity:	400 µL
Target:	MS4A6A
Binding Specificity:	AA 11-38, N-Term
Reactivity:	Human
Host:	Rabbit
Clonality:	Polyclonal
Conjugate:	This MS4A6A antibody is un-conjugated
Application:	Western Blotting (WB)

Product Details

Immunogen:	This MS4A6A antibody is generated from rabbits immunized with a KLH conjugated synthetic peptide between 11-38 amino acids from the N-terminal region of human MS4A6A.
Clone:	RB38305
Isotype:	Ig Fraction
Purification:	This antibody is purified through a protein A column, followed by peptide affinity purification.

Target Details

Target:	MS4A6A
Alternative Name:	MS4A6A ( <a href="#">MS4A6A Products</a> )
Background:	This gene encodes a member of the membrane-spanning 4A gene family. Members of this

## Target Details

---

nascent protein family are characterized by common structural features and similar intron/exon splice boundaries and display unique expression patterns among hematopoietic cells and nonlymphoid tissues. The gene encoding this protein is localized to 11q12.1, among a cluster of family members. Alternative splicing of this gene results in several transcript variants.

Molecular Weight:	26943
Gene ID:	64231
NCBI Accession:	<a href="#">NP_001234928</a> , <a href="#">NP_071744</a> , <a href="#">NP_690590</a> , <a href="#">NP_690591</a>
UniProt:	<a href="#">Q9H2W1</a>

## Application Details

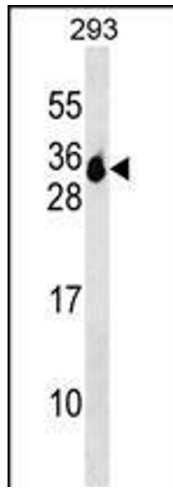
---

Application Notes:	WB: 1:1000
Restrictions:	For Research Use only

## Handling

---

Format:	Liquid
Buffer:	Purified polyclonal antibody supplied in PBS with 0.09 % (W/V) sodium azide.
Preservative:	Sodium azide
Precaution of Use:	This product contains Sodium azide: a POISONOUS AND HAZARDOUS SUBSTANCE which should be handled by trained staff only.
Storage:	4 °C,-20 °C
Storage Comment:	MS4A6A Antibody (N-term) can be refrigerated at 2-8 °C for up to 6 months. For long term storage, keep at -20 °C.
Expiry Date:	6 months



### Western Blotting

**Image 1.** MS4A6A Antibody (N-term) (ABIN1538914 and ABIN2849601) western blot analysis in 293 cell line lysates (35 µg/lane). This demonstrates the MS4A6A antibody detected the MS4A6A protein (arrow).