

Datasheet for ABIN1538917  
**anti-TRAPPC2 antibody (N-Term)**[Go to Product page](#)

## 1 Image

## Overview

Quantity:	400 µL
Target:	TRAPPC2
Binding Specificity:	AA 11-39, N-Term
Reactivity:	Human
Host:	Rabbit
Clonality:	Polyclonal
Application:	Western Blotting (WB)

## Product Details

Immunogen:	This TRAPPC2 antibody is generated from rabbits immunized with a KLH conjugated synthetic peptide between 11-39 amino acids from the N-terminal region of human TRAPPC2.
Clone:	RB35562
Isotype:	Ig Fraction
Predicted Reactivity:	B, C, Zf, M, Pig
Purification:	This antibody is purified through a protein A column, followed by peptide affinity purification.

## Target Details

Target:	TRAPPC2
Alternative Name:	TRAPPC2 ( <a href="#">TRAPPC2 Products</a> )
Background:	TRAPPC2 is thought to be part of a large multi-subunit complex involved in the targeting and

## Target Details

fusion of endoplasmic reticulum-to-Golgi transport vesicles with their acceptor compartment. In addition, the encoded protein can bind c-myc promoter-binding protein 1 and block its transcriptional repression capability. Mutations in this gene are a cause of spondyloepiphyseal dysplasia tarda (SED). A processed pseudogene of this gene is located on chromosome 19, and other pseudogenes are found on chromosomes 8 and Y.

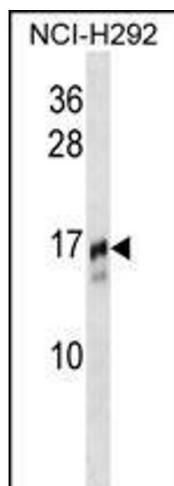
Molecular Weight:	16445
Gene ID:	6399
NCBI Accession:	<a href="#">NP_001011658</a> , <a href="#">NP_001122307</a> , <a href="#">NP_055378</a>
UniProt:	<a href="#">P0DI81</a>

## Application Details

Application Notes:	WB: 1:1000
Restrictions:	For Research Use only

## Handling

Format:	Liquid
Buffer:	Purified polyclonal antibody supplied in PBS with 0.09 % (W/V) sodium azide.
Preservative:	Sodium azide
Precaution of Use:	This product contains Sodium azide: a POISONOUS AND HAZARDOUS SUBSTANCE which should be handled by trained staff only.
Storage:	4 °C,-20 °C
Storage Comment:	TRAPPC2 Antibody (N-term) can be refrigerated at 2-8 °C for up to 6 months. For long term storage, keep at -20 °C.
Expiry Date:	6 months



#### Western Blotting

**Image 1.** TRPC2 Antibody (N-term) 16270a western blot analysis in NCI- cell line lysates (35 µg/lane). This demonstrates the TRPC2 antibody detected the TRPC2 protein (arrow).