



[Go to Product page](#)

Datasheet for ABIN1538920
anti-CDC20B antibody (N-Term)

1 Image

Overview

Quantity:	400 µL
Target:	CDC20B
Binding Specificity:	AA 11-39, N-Term
Reactivity:	Human
Host:	Rabbit
Clonality:	Polyclonal
Application:	Western Blotting (WB)

Product Details

Immunogen:	This CDC20B antibody is generated from rabbits immunized with a KLH conjugated synthetic peptide between 11-39 amino acids from the N-terminal region of human CDC20B.
Clone:	RB37837
Isotype:	Ig Fraction
Purification:	This antibody is purified through a protein A column, followed by peptide affinity purification.

Target Details

Target:	CDC20B
Alternative Name:	CDC20B (CDC20B Products)
Background:	The timely destruction of key regulators through ubiquitin-mediated proteolysis ensures the orderly progression of the cell cycle. The APC (anaphase-promoting complex) is a major component of this degradation machinery and its activation is required for the execution of

Target Details

critical events. CDC20B has been implicated as a meiosis specific activator of APC and is required for sporulation in budding yeast.

Molecular Weight: 57335

Gene ID: 166979

NCBI Accession: [NP_001139206](#), [NP_001163873](#), [NP_689836](#)

UniProt: [Q86Y33](#)

Application Details

Application Notes: WB: 1:1000

Restrictions: For Research Use only

Handling

Format: Liquid

Buffer: Purified polyclonal antibody supplied in PBS with 0.09 % (W/V) sodium azide.

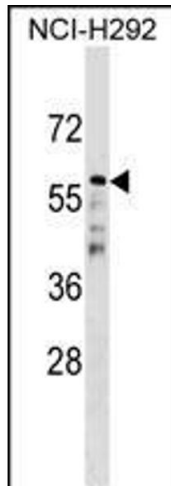
Preservative: Sodium azide

Precaution of Use: This product contains Sodium azide: a POISONOUS AND HAZARDOUS SUBSTANCE which should be handled by trained staff only.

Storage: 4 °C, -20 °C

Storage Comment: CDC20B Antibody (N-term) can be refrigerated at 2-8 °C for up to 6 months. For long term storage, keep at -20 °C.

Expiry Date: 6 months



Western Blotting

Image 1. CDC20B Antibody (N-term) (ABIN1538920 and ABIN2849115) western blot analysis in NCI- cell line lysates (35 µg/lane). This demonstrates the CDC20B antibody detected the CDC20B protein (arrow).