

Datasheet for ABIN1538922  
**anti-LEMD2 antibody (N-Term)**[Go to Product page](#)

## 1 Image

## Overview

Quantity:	400 µL
Target:	LEMD2
Binding Specificity:	AA 10-39, N-Term
Reactivity:	Human
Host:	Rabbit
Clonality:	Polyclonal
Application:	Western Blotting (WB)

## Product Details

Immunogen:	This LEMD2 antibody is generated from rabbits immunized with a KLH conjugated synthetic peptide between 10-39 amino acids from the N-terminal region of human LEMD2.
Clone:	RB39365
Isotype:	Ig Fraction
Purification:	This antibody is purified through a protein A column, followed by peptide affinity purification.

## Target Details

Target:	LEMD2
Alternative Name:	LEMD2 ( <a href="#">LEMD2 Products</a> )
Background:	LEMD2 is involved in nuclear structure organization.
Molecular Weight:	56975

## Target Details

Gene ID:	221496
NCBI Accession:	<a href="#">NP_001137416</a> , <a href="#">NP_851853</a>
UniProt:	<a href="#">Q8NC56</a>

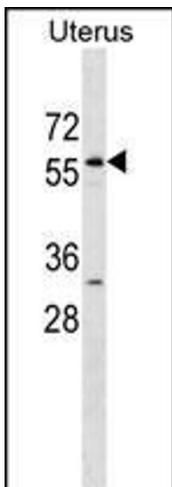
## Application Details

Application Notes:	WB: 1:1000
Restrictions:	For Research Use only

## Handling

Format:	Liquid
Buffer:	Purified polyclonal antibody supplied in PBS with 0.09 % (W/V) sodium azide.
Preservative:	Sodium azide
Precaution of Use:	This product contains Sodium azide: a POISONOUS AND HAZARDOUS SUBSTANCE which should be handled by trained staff only.
Storage:	4 °C,-20 °C
Storage Comment:	LEMD2 Antibody (N-term) can be refrigerated at 2-8 °C for up to 6 months. For long term storage, keep at -20 °C.
Expiry Date:	6 months

## Images



### Western Blotting

**Image 1.** LEMD2 Antibody (N-term) (ABIN1538922 and ABIN2838288) western blot analysis in Uterus tissue lysates (35 µg/lane). This demonstrates the LEMD2 antibody detected the LEMD2 protein (arrow).