



[Go to Product page](#)

Datasheet for ABIN1538931 **anti-ONECUT2 antibody (N-Term)**

1 Image

Overview

Quantity:	400 µL
Target:	ONECUT2
Binding Specificity:	AA 102-130, N-Term
Reactivity:	Human
Host:	Rabbit
Clonality:	Polyclonal
Application:	Western Blotting (WB)

Product Details

Immunogen:	This ONECUT2 antibody is generated from rabbits immunized with a KLH conjugated synthetic peptide between 102-130 amino acids from the N-terminal region of human ONECUT2.
Clone:	RB37275
Isotype:	Ig Fraction
Purification:	This antibody is purified through a protein A column, followed by peptide affinity purification.

Target Details

Target:	ONECUT2
Alternative Name:	ONECUT2 (ONECUT2 Products)
Background:	This gene encodes a member of the onecut family of transcription factors, which are characterized by a cut domain and an atypical homeodomain. The protein binds to specific DNA sequences and stimulates expression of target genes, including genes involved in

Target Details

melanocyte and hepatocyte differentiation.

Molecular Weight: 54303

Gene ID: 9480

NCBI Accession: [NP_004843](#)

UniProt: [O95948](#)

Application Details

Application Notes: WB: 1:1000

Restrictions: For Research Use only

Handling

Format: Liquid

Buffer: Purified polyclonal antibody supplied in PBS with 0.09 % (W/V) sodium azide.

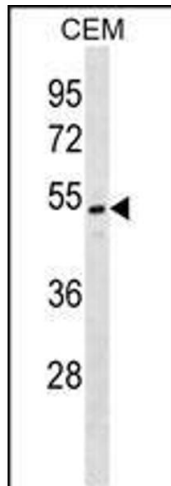
Preservative: Sodium azide

Precaution of Use: This product contains Sodium azide: a POISONOUS AND HAZARDOUS SUBSTANCE which should be handled by trained staff only.

Storage: 4 °C, -20 °C

Storage Comment: ONECUT2 Antibody (N-term) can be refrigerated at 2-8 °C for up to 6 months. For long term storage, keep at -20 °C.

Expiry Date: 6 months



Western Blotting

Image 1. ONECUT2 Antibody (N-term) (ABIN1538931 and ABIN2848980) western blot analysis in CEM cell line lysates (35 µg/lane). This demonstrates the ONECUT2 antibody detected the ONECUT2 protein (arrow).