

Datasheet for ABIN1538959  
**anti-Reticulon 2 antibody (N-Term)**[Go to Product page](#)

## 1 Image

## Overview

Quantity:	400 µL
Target:	Reticulon 2 (RTN2)
Binding Specificity:	AA 109-138, N-Term
Reactivity:	Human
Host:	Rabbit
Clonality:	Polyclonal
Conjugate:	This Reticulon 2 antibody is un-conjugated
Application:	Western Blotting (WB)

## Product Details

Immunogen:	This RTN2 antibody is generated from rabbits immunized with a KLH conjugated synthetic peptide between 109-138 amino acids from the N-terminal region of human RTN2.
Clone:	RB37555
Isotype:	Ig Fraction
Purification:	This antibody is purified through a protein A column, followed by peptide affinity purification.

## Target Details

Target:	Reticulon 2 (RTN2)
Alternative Name:	RTN2 ( <a href="#">RTN2 Products</a> )
Background:	This gene belongs to the family of reticulon encoding genes. Reticulons are associated with the

## Target Details

endoplasmic reticulum, and are involved in neuroendocrine secretion or in membrane trafficking in neuroendocrine cells. Alternatively spliced transcript variants encoding different isoforms have been identified.

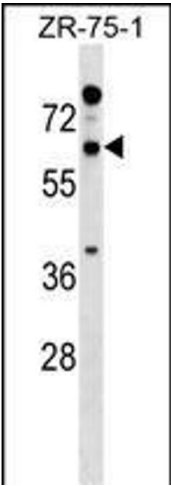
Molecular Weight:	59264
Gene ID:	6253
NCBI Accession:	<a href="#">NP_005610</a> , <a href="#">NP_996783</a> , <a href="#">NP_996784</a>
UniProt:	<a href="#">O75298</a>

## Application Details

Application Notes:	WB: 1:1000
Restrictions:	For Research Use only

## Handling

Format:	Liquid
Buffer:	Purified polyclonal antibody supplied in PBS with 0.09 % (W/V) sodium azide.
Preservative:	Sodium azide
Precaution of Use:	This product contains Sodium azide: a POISONOUS AND HAZARDOUS SUBSTANCE which should be handled by trained staff only.
Storage:	4 °C, -20 °C
Storage Comment:	RTN2 Antibody (N-term) can be refrigerated at 2-8 °C for up to 6 months. For long term storage, keep at -20 °C.
Expiry Date:	6 months



Western Blotting

**Image 1.** RTN2 Antibody (N-term) (ABIN1538959 and ABIN2849101) western blot analysis in ZR-75-1 cell line lysates (35 µg/lane). This demonstrates the RTN2 antibody detected the RTN2 protein (arrow).