



[Go to Product page](#)

Datasheet for ABIN1538969
anti-NXPH3 antibody (N-Term)

1 Image

Overview

Quantity:	400 µL
Target:	NXPH3
Binding Specificity:	AA 12-41, N-Term
Reactivity:	Human, Mouse
Host:	Rabbit
Clonality:	Polyclonal
Conjugate:	This NXPH3 antibody is un-conjugated
Application:	Western Blotting (WB)

Product Details

Immunogen:	This NXPH3 antibody is generated from rabbits immunized with a KLH conjugated synthetic peptide between 12-41 amino acids from the N-terminal region of human NXPH3.
Clone:	RB32683
Isotype:	Ig Fraction
Purification:	This antibody is purified through a protein A column, followed by peptide affinity purification.

Target Details

Target:	NXPH3
Alternative Name:	NXPH3 (NXPH3 Products)
Background:	NXPH3 may be signaling molecules that resemble neuropeptides. Ligand for alpha-neurexins

Target Details

(By similarity).

Molecular Weight: 28127

Gene ID: 11248

NCBI Accession: [NP_009156](#)

UniProt: [O95157](#)

Application Details

Application Notes: WB: 1:1000

Restrictions: For Research Use only

Handling

Format: Liquid

Buffer: Purified polyclonal antibody supplied in PBS with 0.09 % (W/V) sodium azide.

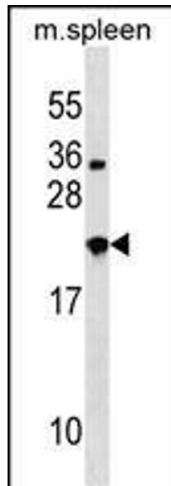
Preservative: Sodium azide

Precaution of Use: This product contains Sodium azide: a POISONOUS AND HAZARDOUS SUBSTANCE which should be handled by trained staff only.

Storage: 4 °C, -20 °C

Storage Comment: NXPH3 Antibody (N-term) can be refrigerated at 2-8 °C for up to 6 months. For long term storage, keep at -20 °C.

Expiry Date: 6 months



Western Blotting

Image 1. NXP3 Antibody (N-term) (ABIN1538969 and ABIN2848564) western blot analysis in mouse spleen tissue lysates (35 µg/lane). This demonstrates the NXP3 antibody detected the NXP3 protein (arrow).