

Datasheet for ABIN1538974
anti-NAP1L2 antibody (N-Term)



[Go to Product page](#)

1 Image

Overview

Quantity:	400 µL
Target:	NAP1L2
Binding Specificity:	AA 113-139, N-Term
Reactivity:	Human
Host:	Rabbit
Clonality:	Polyclonal
Conjugate:	This NAP1L2 antibody is un-conjugated
Application:	Western Blotting (WB)

Product Details

Immunogen:	This NAP1L2 antibody is generated from rabbits immunized with a KLH conjugated synthetic peptide between 113-139 amino acids from the N-terminal region of human NAP1L2.
Clone:	RB38310
Isotype:	Ig Fraction
Predicted Reactivity:	M
Purification:	This antibody is purified through a protein A column, followed by peptide affinity purification.

Target Details

Target:	NAP1L2
Alternative Name:	NAP1L2 (NAP1L2 Products)

Target Details

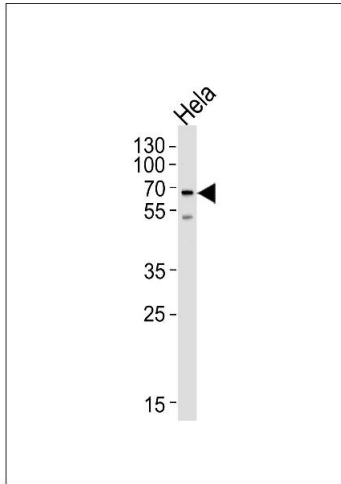
Background:	This gene encodes a member of the nucleosome assembly protein (NAP) family. The function of this family member is unknown, however, mouse studies suggest that it represents a class of tissue-specific factors interacting with chromatin to regulate neuronal cell proliferation.
Molecular Weight:	52542
Gene ID:	4674
NCBI Accession:	NP_068798
UniProt:	Q9ULW6

Application Details

Application Notes:	WB: 1:1000
Restrictions:	For Research Use only

Handling

Format:	Liquid
Buffer:	Purified polyclonal antibody supplied in PBS with 0.09 % (W/V) sodium azide.
Preservative:	Sodium azide
Precaution of Use:	This product contains Sodium azide: a POISONOUS AND HAZARDOUS SUBSTANCE which should be handled by trained staff only.
Storage:	4 °C, -20 °C
Storage Comment:	NAP1L2 Antibody (N-term) can be refrigerated at 2-8 °C for up to 6 months. For long term storage, keep at -20 °C.
Expiry Date:	6 months



Western Blotting

Image 1. Western blot analysis of lysate from HeLa cell line, using NL2 Antibody (N-term) 8278a. 8278a was diluted at 1:1000 at each lane. A goat anti-rabbit IgG H&L(HRP) at 1:5000 dilution was used as the secondary antibody. Lysate at 35 µg per lane.