

Datasheet for ABIN1538980
anti-TACC1 antibody (N-Term)[Go to Product page](#)

1 Image

Overview

Quantity:	400 µL
Target:	TACC1
Binding Specificity:	AA 117-145, N-Term
Reactivity:	Human
Host:	Rabbit
Clonality:	Polyclonal
Application:	Western Blotting (WB)

Product Details

Immunogen:	This TACC1 antibody is generated from rabbits immunized with a KLH conjugated synthetic peptide between 117-145 amino acids from the N-terminal region of human TACC1.
Clone:	RB36991
Isotype:	Ig Fraction
Purification:	This antibody is purified through a protein A column, followed by peptide affinity purification.

Target Details

Target:	TACC1
Alternative Name:	TACC1 (TACC1 Products)
Background:	This locus may represent a breast cancer candidate gene. It is located close to FGFR1 on a region of chromosome 8 that is amplified in some breast cancers. Three transcript variants encoding different isoforms have been found for this gene.

Target Details

Molecular Weight:	87794
Gene ID:	6867
NCBI Accession:	NP_001116296 , NP_001139688 , NP_006274
UniProt:	O75410

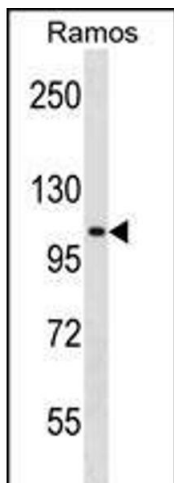
Application Details

Application Notes:	WB: 1:1000
Restrictions:	For Research Use only

Handling

Format:	Liquid
Buffer:	Purified polyclonal antibody supplied in PBS with 0.09 % (W/V) sodium azide.
Preservative:	Sodium azide
Precaution of Use:	This product contains Sodium azide: a POISONOUS AND HAZARDOUS SUBSTANCE which should be handled by trained staff only.
Storage:	4 °C, -20 °C
Storage Comment:	TACC1 Antibody (N-term) can be refrigerated at 2-8 °C for up to 6 months. For long term storage, keep at -20 °C.
Expiry Date:	6 months

Images



Western Blotting

Image 1. TACC1 Antibody (N-term) (ABIN1538980 and ABIN2849037) western blot analysis in Ramos cell line lysates (35 µg/lane). This demonstrates the TACC1 antibody detected the TACC1 protein (arrow).