

Datasheet for ABIN1538986
anti-DPH2 antibody (N-Term)[Go to Product page](#)

1 Image

Overview

Quantity:	400 µL
Target:	DPH2
Binding Specificity:	AA 121-148, N-Term
Reactivity:	Human
Host:	Rabbit
Clonality:	Polyclonal
Application:	Western Blotting (WB)

Product Details

Immunogen:	This DPH2 antibody is generated from rabbits immunized with a KLH conjugated synthetic peptide between 121-148 amino acids from the N-terminal region of human DPH2.
Clone:	RB38223
Isotype:	Ig Fraction
Purification:	This antibody is purified through a protein A column, followed by peptide affinity purification.

Target Details

Target:	DPH2
Alternative Name:	DPH2 (DPH2 Products)
Background:	This gene is one of two human genes similar to the yeast gene dph2. The yeast gene was identified by its ability to complement a diphthamide mutant strain, and thus probably functions in diphthamide biosynthesis. Diphthamide is a post-translationally modified histidine residue

Target Details

present in elongation factor 2 (EF2) that is the target of diphtheria toxin ADP-ribosylation. Two transcript variants encoding different isoforms have been found for this gene.

Molecular Weight: 52083

Gene ID: 1802

NCBI Accession: [NP_001034678](#), [NP_001375](#)

UniProt: [Q9BQC3](#)

Application Details

Application Notes: WB: 1:1000

Restrictions: For Research Use only

Handling

Format: Liquid

Buffer: Purified polyclonal antibody supplied in PBS with 0.09 % (W/V) sodium azide.

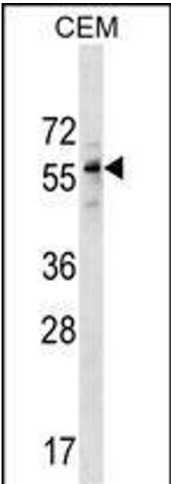
Preservative: Sodium azide

Precaution of Use: This product contains Sodium azide: a POISONOUS AND HAZARDOUS SUBSTANCE which should be handled by trained staff only.

Storage: 4 °C, -20 °C

Storage Comment: DPH2 Antibody (N-term) can be refrigerated at 2-8 °C for up to 6 months. For long term storage, keep at -20 °C.

Expiry Date: 6 months



Western Blotting

Image 1. DPH2 Antibody (N-term) (ABIN1538986 and ABIN2849764) western blot analysis in CEM cell line lysates (35 µg/lane). This demonstrates the DPH2 antibody detected the DPH2 protein (arrow).