

Datasheet for ABIN1539001
anti-APPL2 antibody (N-Term)[Go to Product page](#)

1 Image

Overview

Quantity:	400 µL
Target:	APPL2
Binding Specificity:	AA 124-152, N-Term
Reactivity:	Human
Host:	Rabbit
Clonality:	Polyclonal
Application:	Western Blotting (WB)

Product Details

Immunogen:	This APPL2 antibody is generated from rabbits immunized with a KLH conjugated synthetic peptide between 124-152 amino acids from the N-terminal region of human APPL2.
Clone:	RB37296
Isotype:	Ig Fraction
Predicted Reactivity:	M, Rat
Purification:	This antibody is purified through a protein A column, followed by peptide affinity purification.

Target Details

Target:	APPL2
Alternative Name:	APPL2 (APPL2 Products)
Background:	Required for the regulation of cell proliferation in response to extracellular signals mediated by

Target Details

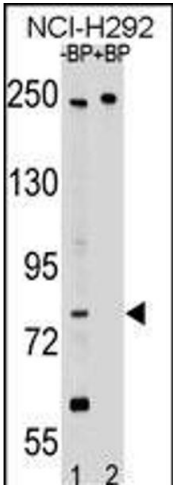
	an early endosomal compartment. Links Rab5 to nuclear signal transduction.
Molecular Weight:	74493
Gene ID:	55198
NCBI Accession:	NP_001238833 , NP_001238834 , NP_060641
UniProt:	Q8NEU8

Application Details

Application Notes:	WB: 1:1000
Restrictions:	For Research Use only

Handling

Format:	Liquid
Buffer:	Purified polyclonal antibody supplied in PBS with 0.09 % (W/V) sodium azide.
Preservative:	Sodium azide
Precaution of Use:	This product contains Sodium azide: a POISONOUS AND HAZARDOUS SUBSTANCE which should be handled by trained staff only.
Storage:	4 °C,-20 °C
Storage Comment:	APPL2 Antibody (N-term) can be refrigerated at 2-8 °C for up to 6 months. For long term storage, keep at -20 °C.
Expiry Date:	6 months



Western Blotting

Image 1. Western blot analysis of PL2 Antibody (N-term) Pab 17460a pre-incubated without(lane 1) and with(lane 2) blocking peptide in NCI- cell line lysate. PL2 Antibody (N-term) (arrow) was detected using the purified Pab.