

Datasheet for ABIN1539013
anti-Septin 10 antibody (N-Term)[Go to Product page](#)

1 Image

Overview

Quantity:	400 µL
Target:	Septin 10 (SEPT10)
Binding Specificity:	AA 14-40, N-Term
Reactivity:	Human
Host:	Rabbit
Clonality:	Polyclonal
Application:	Western Blotting (WB)

Product Details

Immunogen:	This SEPT10 antibody is generated from rabbits immunized with a KLH conjugated synthetic peptide between 14-40 amino acids from the N-terminal region of human SEPT10.
Clone:	RB38137
Isotype:	Ig Fraction
Purification:	This antibody is purified through a protein A column, followed by peptide affinity purification.

Target Details

Target:	Septin 10 (SEPT10)
Alternative Name:	SEPT10 (SEPT10 Products)
Background:	<p>This gene encodes a member of the septin family of cytoskeletal proteins with GTPase activity.</p> <p>This protein localizes to the cytoplasm and nucleus and displays GTP-binding and GTPase activity. Alternate splicing results in two transcript variants encoding different isoforms.</p>

Target Details

Molecular Weight:	52593
Gene ID:	151011
NCBI Accession:	NP_653311 , NP_848699
UniProt:	Q9P0V9

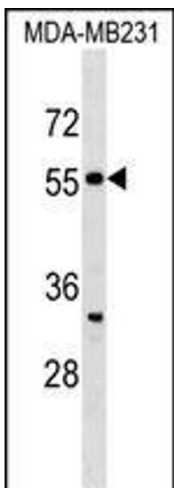
Application Details

Application Notes:	WB: 1:1000
Restrictions:	For Research Use only

Handling

Format:	Liquid
Buffer:	Purified polyclonal antibody supplied in PBS with 0.09 % (W/V) sodium azide.
Preservative:	Sodium azide
Precaution of Use:	This product contains Sodium azide: a POISONOUS AND HAZARDOUS SUBSTANCE which should be handled by trained staff only.
Storage:	4 °C, -20 °C
Storage Comment:	SEPT10 Antibody (N-term) can be refrigerated at 2-8 °C for up to 6 months. For long term storage, keep at -20 °C.
Expiry Date:	6 months

Images



Western Blotting

Image 1. SEPT10 Antibody (N-term) (ABIN1539013 and ABIN2849459) western blot analysis in MDA-M cell line lysates (35 µg/lane). This demonstrates the SEPT10 antibody detected the SEPT10 protein (arrow).