

Datasheet for ABIN1539020  
**anti-NKX2-6 antibody (N-Term)**



[Go to Product page](#)

1 Image

## Overview

Quantity:	400 µL
Target:	NKX2-6
Binding Specificity:	AA 14-42, N-Term
Reactivity:	Human
Host:	Rabbit
Clonality:	Polyclonal
Conjugate:	This NKX2-6 antibody is un-conjugated
Application:	Western Blotting (WB)

## Product Details

Immunogen:	This NKX2-6 antibody is generated from rabbits immunized with a KLH conjugated synthetic peptide between 14-42 amino acids from the N-terminal region of human NKX2-6.
Clone:	RB33532
Isotype:	Ig Fraction
Purification:	This antibody is purified through a protein A column, followed by peptide affinity purification.

## Target Details

Target:	NKX2-6
Alternative Name:	NKX2-6 ( <a href="#">NKX2-6 Products</a> )
Background:	In conjunction with NKX2-5, may play a role in both pharyngeal and cardiac embryonic

## Target Details

---

development (By similarity).

Molecular Weight: 32121

Gene ID: 137814

NCBI Accession: [NP\\_001129743](#)

UniProt: [A6NCS4](#)

## Application Details

---

Application Notes: WB: 1:1000

Restrictions: For Research Use only

## Handling

---

Format: Liquid

Buffer: Purified polyclonal antibody supplied in PBS with 0.09 % (W/V) sodium azide.

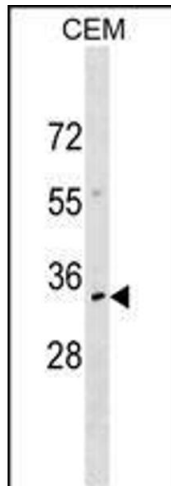
Preservative: Sodium azide

Precaution of Use: This product contains Sodium azide: a POISONOUS AND HAZARDOUS SUBSTANCE which should be handled by trained staff only.

Storage: 4 °C, -20 °C

Storage Comment: NKX2-6 Antibody (N-term) can be refrigerated at 2-8 °C for up to 6 months. For long term storage, keep at -20 °C.

Expiry Date: 6 months



#### Western Blotting

**Image 1.** NKX2-6 Antibody (N-term) (ABIN1539020 and ABIN2849720) western blot analysis in CEM cell line lysates (35 µg/lane). This demonstrates the NKX2-6 antibody detected the NKX2-6 protein (arrow).