

Datasheet for ABIN1539025
anti-GRPEL2 antibody (N-Term)[Go to Product page](#)

2 Images

Overview

Quantity:	400 µL
Target:	GRPEL2
Binding Specificity:	AA 14-43, N-Term
Reactivity:	Human, Mouse
Host:	Rabbit
Clonality:	Polyclonal
Application:	Western Blotting (WB)

Product Details

Immunogen:	This GRPEL2 antibody is generated from rabbits immunized with a KLH conjugated synthetic peptide between 14-43 amino acids from the N-terminal region of human GRPEL2.
Clone:	RB39804
Isotype:	Ig Fraction
Purification:	This antibody is purified through a protein A column, followed by peptide affinity purification.

Target Details

Target:	GRPEL2
Alternative Name:	GRPEL2 (GRPEL2 Products)
Background:	Essential component of the PAM complex, a complex required for the translocation of transit peptide-containing proteins from the inner membrane into the mitochondrial matrix in an ATP-dependent manner. Seems to control the nucleotide-dependent binding of mitochondrial

Target Details

HSP70 to substrate proteins. Stimulates ATPase activity of mt-HSP70. May also serve to modulate the interconversion of oligomeric (inactive) and monomeric (active) forms of mt-HSP70 (By similarity).

Molecular Weight: 25431

Gene ID: 134266

NCBI Accession: [NP_689620](#)

UniProt: [Q8TAA5](#)

Application Details

Application Notes: WB: 1:1000. WB: 1:1000

Restrictions: For Research Use only

Handling

Format: Liquid

Buffer: Purified polyclonal antibody supplied in PBS with 0.09 % (W/V) sodium azide.

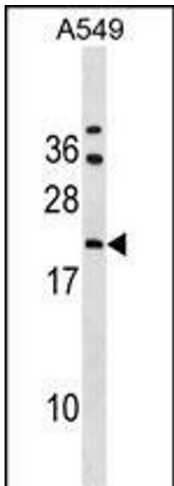
Preservative: Sodium azide

Precaution of Use: This product contains Sodium azide: a POISONOUS AND HAZARDOUS SUBSTANCE which should be handled by trained staff only.

Storage: 4 °C, -20 °C

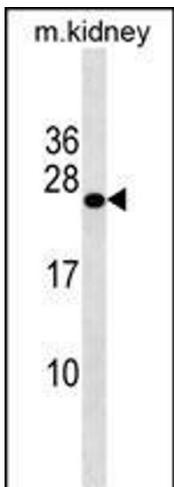
Storage Comment: GRPEL2 Antibody (N-term) can be refrigerated at 2-8 °C for up to 6 months. For long term storage, keep at -20 °C.

Expiry Date: 6 months



Western Blotting

Image 1. GRPEL2 Antibody (N-term) (ABIN1539025 and ABIN2838203) western blot analysis in A549 cell line lysates (35 µg/lane). This demonstrates the GRPEL2 antibody detected the GRPEL2 protein (arrow).



Western Blotting

Image 2. GRPEL2 Antibody (N-term) (ABIN1539025 and ABIN2838203) western blot analysis in mouse kidney tissue lysates (35 µg/lane). This demonstrates the GRPEL2 antibody detected the GRPEL2 protein (arrow).