

Datasheet for ABIN1539028
anti-Calcium Responsive Transcription Factor (CARF) (AA 132-158), (N-Term) antibody



[Go to Product page](#)

1 Image

Overview

Quantity:	400 µL
Target:	Calcium Responsive Transcription Factor (CARF)
Binding Specificity:	AA 132-158, N-Term
Reactivity:	Human
Host:	Rabbit
Clonality:	Polyclonal
Application:	Western Blotting (WB)

Product Details

Immunogen:	This ALS2CR8 antibody is generated from rabbits immunized with a KLH conjugated synthetic peptide between 132-158 amino acids from the N-terminal region of human ALS2CR8.
Clone:	RB38576
Isotype:	Ig Fraction
Purification:	This antibody is purified through a protein A column, followed by peptide affinity purification.

Target Details

Target:	Calcium Responsive Transcription Factor (CARF)
Alternative Name:	ALS2CR8 (CARF Products)
Background:	ALS2CR8 may be a transcription factor (By similarity).
Molecular Weight:	80698

Target Details

Gene ID:	79800
NCBI Accession:	NP_001098056
UniProt:	Q8N187

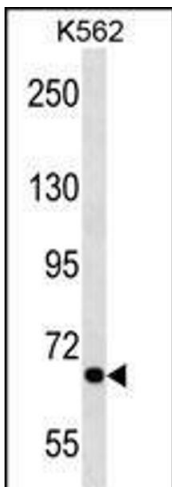
Application Details

Application Notes:	WB: 1:1000
Restrictions:	For Research Use only

Handling

Format:	Liquid
Buffer:	Purified polyclonal antibody supplied in PBS with 0.09 % (W/V) sodium azide.
Preservative:	Sodium azide
Precaution of Use:	This product contains Sodium azide: a POISONOUS AND HAZARDOUS SUBSTANCE which should be handled by trained staff only.
Storage:	4 °C,-20 °C
Storage Comment:	ALS2CR8 Antibody (N-term) can be refrigerated at 2-8 °C for up to 6 months. For long term storage, keep at -20 °C.
Expiry Date:	6 months

Images



Western Blotting

Image 1. ALS2CR8 Antibody (N-term) (ABIN1539028 and ABIN2850130) western blot analysis in K562 cell line lysates (35 µg/lane). This demonstrates the ALS2CR8 antibody detected the ALS2CR8 protein (arrow).