



[Go to Product page](#)

Datasheet for ABIN1539041

## anti-MICALCL antibody (N-Term)

### 1 Image

#### Overview

Quantity:	400 µL
Target:	MICALCL
Binding Specificity:	AA 135-163, N-Term
Reactivity:	Human
Host:	Rabbit
Clonality:	Polyclonal
Application:	Western Blotting (WB)

#### Product Details

Immunogen:	This MICALCL antibody is generated from rabbits immunized with a KLH conjugated synthetic peptide between 135-163 amino acids from the N-terminal region of human MICALCL.
Clone:	RB28737
Isotype:	Ig Fraction
Purification:	This antibody is purified through a protein A column, followed by peptide affinity purification.

#### Target Details

Target:	MICALCL
Alternative Name:	MICALCL ( <a href="#">MICALCL Products</a> )
Background:	MICALCL may cooperate with MAPK1/ERK2 via an intracellular signal transduction pathway in the morphogenetic development of round spermatids to spermatozoa (By similarity).

## Target Details

Molecular Weight:	77277
Gene ID:	84953
NCBI Accession:	<a href="#">NP_116256</a>
UniProt:	<a href="#">Q6ZW33</a>

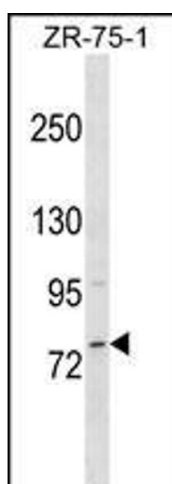
## Application Details

Application Notes:	WB: 1:1000
Restrictions:	For Research Use only

## Handling

Format:	Liquid
Buffer:	Purified polyclonal antibody supplied in PBS with 0.09 % (W/V) sodium azide.
Preservative:	Sodium azide
Precaution of Use:	This product contains Sodium azide: a POISONOUS AND HAZARDOUS SUBSTANCE which should be handled by trained staff only.
Storage:	4 °C, -20 °C
Storage Comment:	MICALCL Antibody (N-term) can be refrigerated at 2-8 °C for up to 6 months. For long term storage, keep at -20 °C.
Expiry Date:	6 months

## Images



### Western Blotting

**Image 1.** MICALCL Antibody (N-term) (ABIN1539041 and ABIN2849535) western blot analysis in ZR-75-1 cell line lysates (35 µg/lane). This demonstrates the MICALCL antibody detected the MICALCL protein (arrow).