

Datasheet for ABIN1539042
anti-KRT6A antibody (N-Term)[Go to Product page](#)

1 Image

Overview

Quantity:	400 µL
Target:	KRT6A
Binding Specificity:	AA 135-164, N-Term
Reactivity:	Human
Host:	Rabbit
Clonality:	Polyclonal
Conjugate:	This KRT6A antibody is un-conjugated
Application:	Western Blotting (WB)

Product Details

Immunogen:	This KRT6A antibody is generated from rabbits immunized with a KLH conjugated synthetic peptide between 135-164 amino acids from the N-terminal region of human KRT6A.
Clone:	RB36655
Isotype:	Ig Fraction
Purification:	This antibody is purified through a protein A column, followed by peptide affinity purification.

Target Details

Target:	KRT6A
Alternative Name:	KRT6A (KRT6A Products)
Background:	The protein encoded by this gene is a member of the keratin gene family. The type II

Target Details

cytokeratins consist of basic or neutral proteins which are arranged in pairs of heterotypic keratin chains coexpressed during differentiation of simple and stratified epithelial tissues. As many as six of this type II cytokeratin (KRT6) have been identified, the multiplicity of the genes is attributed to successive gene duplication events. The genes are expressed with family members KRT16 and/or KRT17 in the filiform papillae of the tongue, the stratified epithelial lining of oral mucosa and esophagus, the outer root sheath of hair follicles, and the glandular epithelia. This KRT6 gene in particular encodes the most abundant isoform. Mutations in these genes have been associated with pachyonychia congenita. The type II cytokeratins are clustered in a region of chromosome 12q12-q13. [provided by RefSeq].

Molecular Weight:	60045
-------------------	-------

Gene ID:	3853
----------	------

NCBI Accession:	NP_005545
-----------------	---------------------------

UniProt:	P02538
----------	------------------------

Application Details

Application Notes:	WB: 1:1000
--------------------	------------

Restrictions:	For Research Use only
---------------	-----------------------

Handling

Format:	Liquid
---------	--------

Buffer:	Purified polyclonal antibody supplied in PBS with 0.09 % (W/V) sodium azide.
---------	--

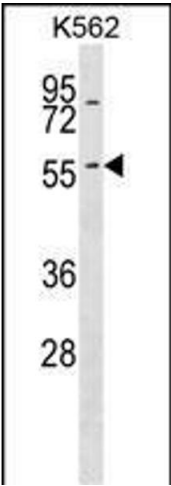
Preservative:	Sodium azide
---------------	--------------

Precaution of Use:	This product contains Sodium azide: a POISONOUS AND HAZARDOUS SUBSTANCE which should be handled by trained staff only.
--------------------	--

Storage:	4 °C, -20 °C
----------	--------------

Storage Comment:	KRT6A Antibody (N-term) can be refrigerated at 2-8 °C for up to 6 months. For long term storage, keep at -20 °C.
------------------	--

Expiry Date:	6 months
--------------	----------



Western Blotting

Image 1. KRT6A Antibody (N-term) (ABIN1539042 and ABIN2848629) western blot analysis in K562 cell line lysates (35 µg/lane). This demonstrates the KRT6A antibody detected the KRT6A protein (arrow).