



[Go to Product page](#)

Datasheet for ABIN1539056
anti-SCML1 antibody (N-Term)

1 Image

Overview

Quantity:	400 µL
Target:	SCML1
Binding Specificity:	AA 15-41, N-Term
Reactivity:	Human
Host:	Rabbit
Clonality:	Polyclonal
Conjugate:	This SCML1 antibody is un-conjugated
Application:	Western Blotting (WB)

Product Details

Immunogen:	This SCML1 antibody is generated from rabbits immunized with a KLH conjugated synthetic peptide between 15-41 amino acids from the N-terminal region of human SCML1.
Clone:	RB38357
Isotype:	Ig Fraction
Purification:	This antibody is purified through a protein A column, followed by peptide affinity purification.

Target Details

Target:	SCML1
Alternative Name:	SCML1 (SCML1 Products)
Background:	Putative Polycomb group (PcG) protein. PcG proteins act by forming multiprotein complexes,

Target Details

which are required to maintain the transcriptionally repressive state of homeotic genes throughout development. May be involved in spermatogenesis during sexual maturation (By similarity).

Molecular Weight: 37447

Gene ID: 6322

NCBI Accession: [NP_001032624](#), [NP_001032625](#), [NP_001032629](#), [NP_006737](#)

UniProt: [Q9UN30](#)

Application Details

Application Notes: WB: 1:1000

Restrictions: For Research Use only

Handling

Format: Liquid

Buffer: Purified polyclonal antibody supplied in PBS with 0.09 % (W/V) sodium azide.

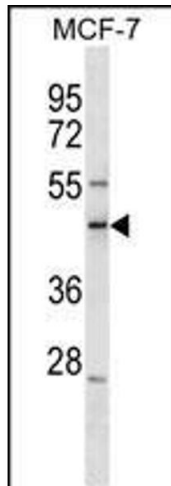
Preservative: Sodium azide

Precaution of Use: This product contains Sodium azide: a POISONOUS AND HAZARDOUS SUBSTANCE which should be handled by trained staff only.

Storage: 4 °C, -20 °C

Storage Comment: SCML1 Antibody (N-term) can be refrigerated at 2-8 °C for up to 6 months. For long term storage, keep at -20 °C.

Expiry Date: 6 months



Western Blotting

Image 1. SCML1 Antibody (N-term) (ABIN1539056 and ABIN2849874) western blot analysis in MCF-7 cell line lysates (35 µg/lane). This demonstrates the SCML1 Antibody detected the SCML1 protein (arrow).