

Datasheet for ABIN1539057
anti-ALG8 antibody (N-Term)[Go to Product page](#)

1 Image

Overview

Quantity:	400 µL
Target:	ALG8
Binding Specificity:	AA 15-41, N-Term
Reactivity:	Human
Host:	Rabbit
Clonality:	Polyclonal
Application:	Western Blotting (WB)

Product Details

Immunogen:	This ALG8 antibody is generated from rabbits immunized with a KLH conjugated synthetic peptide between 15-41 amino acids from the N-terminal region of human ALG8.
Clone:	RB38577
Isotype:	Ig Fraction
Predicted Reactivity:	B, M
Purification:	This antibody is purified through a protein A column, followed by peptide affinity purification.

Target Details

Target:	ALG8
Alternative Name:	ALG8 (ALG8 Products)
Background:	This gene encodes a member of the ALG6/ALG8 glucosyltransferase family. The encoded

Target Details

protein catalyzes the addition of the second glucose residue to the lipid-linked oligosaccharide precursor for N-linked glycosylation of proteins. Mutations in this gene have been associated with congenital disorder of glycosylation type 1h (CDG-1h). Alternatively spliced transcript variants encoding different isoforms have been identified.

Molecular Weight: 60088

Gene ID: 79053

NCBI Accession: [NP_001007028](#), [NP_076984](#)

UniProt: [Q9BVK2](#)

Pathways: [SARS-CoV-2 Protein Interactome](#)

Application Details

Application Notes: WB: 1:1000

Restrictions: For Research Use only

Handling

Format: Liquid

Buffer: Purified polyclonal antibody supplied in PBS with 0.09 % (W/V) sodium azide.

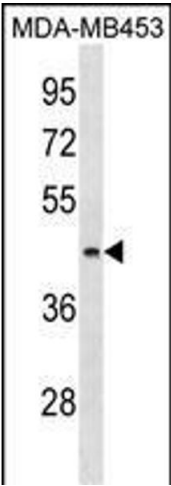
Preservative: Sodium azide

Precaution of Use: This product contains Sodium azide: a POISONOUS AND HAZARDOUS SUBSTANCE which should be handled by trained staff only.

Storage: 4 °C, -20 °C

Storage Comment: ALG8 Antibody (N-term) can be refrigerated at 2-8 °C for up to 6 months. For long term storage, keep at -20 °C.

Expiry Date: 6 months



Western Blotting

Image 1. ALG8 Antibody (N-term) (ABIN1539057 and ABIN2850016) western blot analysis in MDA-M cell line lysates (35 µg/lane). This demonstrates the ALG8 antibody detected the ALG8 protein (arrow).