



[Go to Product page](#)

Datasheet for ABIN1539058  
**anti-GOLGA6L9 antibody (N-Term)**

1 Image

Overview

|                      |   |
|----------------------|---|
| Quantity:            | 400 µL                                  |
| Target:              | GOLGA6L9                                |
| Binding Specificity: | AA 15-41, N-Term                        |
| Reactivity:          | Human                                   |
| Host:                | Rabbit                                  |
| Clonality:           | Polyclonal                              |
| Conjugate:           | This GOLGA6L9 antibody is un-conjugated |
| Application:         | Western Blotting (WB)                   |

Product Details

|               |  |
|---------------|--|
| Immunogen:    | This GOLGA6L9 antibody is generated from rabbits immunized with a KLH conjugated synthetic peptide between 15-41 amino acids from the N-terminal region of human GOLGA6L9. |
| Clone:        | RB38797  |
| Isotype:      | Ig Fraction  |
| Purification: | This antibody is purified through a protein A column, followed by peptide affinity purification.   |

Target Details

|                   |  |
|-------------------|--|
| Target:           | GOLGA6L9                                       |
| Alternative Name: | GOLGA6L9 ( <a href="#">GOLGA6L9 Products</a> ) |
| Background:       | The function of this protein remains unknown.  |

## Target Details

|                   |                           |
|-------------------|---------------------------|
| Molecular Weight: | 49193                     |
| Gene ID:          | 728636, 440295            |
| NCBI Accession:   | <a href="#">NP_937824</a> |
| UniProt:          | <a href="#">A6NEM1</a>    |

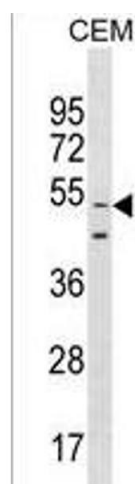
## Application Details

|                    |                       |
|--------------------|-----------------------|
| Application Notes: | WB: 1:1000            |
| Restrictions:      | For Research Use only |

## Handling

|                    |  |
|--------------------|--|
| Format:            | Liquid   |
| Buffer:            | Purified polyclonal antibody supplied in PBS with 0.09 % (W/V) sodium azide.   |
| Preservative:      | Sodium azide   |
| Precaution of Use: | This product contains Sodium azide: a POISONOUS AND HAZARDOUS SUBSTANCE which should be handled by trained staff only. |
| Storage:           | 4 °C, -20 °C   |
| Storage Comment:   | GOLGA6L9 Antibody (N-term) can be refrigerated at 2-8 °C for up to 6 months. For long term storage, keep at -20 °C.    |
| Expiry Date:       | 6 months   |

## Images



### Western Blotting

**Image 1.** GOLGA6L9 Antibody (N-term) (ABIN1539058 and ABIN2850032) western blot analysis in CEM cell line lysates (35 µg/lane). This demonstrates the GOLGA6L9 antibody detected the GOLGA6L9 protein (arrow).