



[Go to Product page](#)

Datasheet for ABIN1539059

anti-BLACE antibody (N-Term)

1 Image

Overview

| | |
|----------------------|--------------------------------------|
| Quantity: | 400 µL |
| Target: | BLACE |
| Binding Specificity: | AA 15-41, N-Term |
| Reactivity: | Human |
| Host: | Rabbit |
| Clonality: | Polyclonal |
| Conjugate: | This BLACE antibody is un-conjugated |
| Application: | Western Blotting (WB) |

Product Details

| | |
|---------------|--|
| Immunogen: | This BLACE antibody is generated from rabbits immunized with a KLH conjugated synthetic peptide between 15-41 amino acids from the N-terminal region of human BLACE. |
| Clone: | RB38703 |
| Isotype: | Ig Fraction |
| Purification: | This antibody is purified through a protein A column, followed by peptide affinity purification. |

Target Details

| | |
|-------------------|---|
| Target: | BLACE |
| Alternative Name: | BLACE (BLACE Products) |
| Background: | The function of this protein remains unknown. |

Target Details

| | |
|-------------------|------------------------|
| Molecular Weight: | 19503 |
| Gene ID: | 338436 |
| UniProt: | A4D250 |

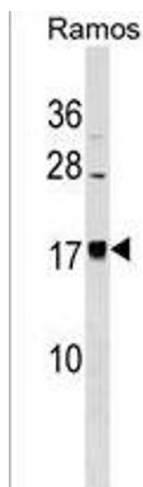
Application Details

| | |
|--------------------|-----------------------|
| Application Notes: | WB: 1:1000 |
| Restrictions: | For Research Use only |

Handling

| | |
|--------------------|--|
| Format: | Liquid |
| Buffer: | Purified polyclonal antibody supplied in PBS with 0.09 % (W/V) sodium azide. |
| Preservative: | Sodium azide |
| Precaution of Use: | This product contains Sodium azide: a POISONOUS AND HAZARDOUS SUBSTANCE which should be handled by trained staff only. |
| Storage: | 4 °C, -20 °C |
| Storage Comment: | BLACE Antibody (N-term) can be refrigerated at 2-8 °C for up to 6 months. For long term storage, keep at -20 °C. |
| Expiry Date: | 6 months |

Images



Western Blotting

Image 1. BLACE Antibody (N-term) (ABIN1539059 and ABIN2838162) western blot analysis in Ramos cell line lysates (35 µg/lane). This demonstrates the BLACE antibody detected the BLACE protein (arrow).