

Datasheet for ABIN1539060  
**anti-LRRC39 antibody (N-Term)**



[Go to Product page](#)

1 Image

Overview

Quantity:	400 µL
Target:	LRRC39
Binding Specificity:	AA 15-41, N-Term
Reactivity:	Human
Host:	Rabbit
Clonality:	Polyclonal
Conjugate:	This LRRC39 antibody is un-conjugated
Application:	Western Blotting (WB)

Product Details

Immunogen:	This LRRC39 antibody is generated from rabbits immunized with a KLH conjugated synthetic peptide between 15-41 amino acids from the N-terminal region of human LRRC39.
Clone:	RB39846
Isotype:	Ig Fraction
Predicted Reactivity:	M
Purification:	This antibody is purified through a protein A column, followed by peptide affinity purification.

Target Details

Target:	LRRC39
Alternative Name:	LRRC39 ( <a href="#">LRRC39 Products</a> )

## Target Details

Background:	The function of this protein remains unknown.
Gene ID:	127495
NCBI Accession:	<a href="#">NP_001243314</a> , <a href="#">NP_001243315</a> , <a href="#">NP_001243316</a> , <a href="#">NP_653221</a>
UniProt:	<a href="#">Q96DD0</a>

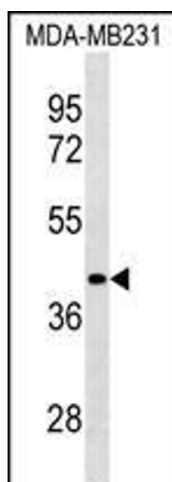
## Application Details

Application Notes:	WB: 1:1000
Restrictions:	For Research Use only

## Handling

Format:	Liquid
Buffer:	Purified polyclonal antibody supplied in PBS with 0.09 % (W/V) sodium azide.
Preservative:	Sodium azide
Precaution of Use:	This product contains Sodium azide: a POISONOUS AND HAZARDOUS SUBSTANCE which should be handled by trained staff only.
Storage:	4 °C, -20 °C
Storage Comment:	LRRC39 Antibody (N-term) can be refrigerated at 2-8 °C for up to 6 months. For long term storage, keep at -20 °C.
Expiry Date:	6 months

## Images



### Western Blotting

**Image 1.** LRRC39 Antibody (N-term) (ABIN1539060 and ABIN2838207) western blot analysis in MDA-M cell line lysates (35 µg/lane). This demonstrates the LRRC39 antibody detected the LRRC39 protein (arrow).