



[Go to Product page](#)

Datasheet for ABIN1539078
anti-Cullin 2 antibody (N-Term)

2 Images

Overview

Quantity:	400 µL
Target:	Cullin 2 (CUL2)
Binding Specificity:	AA 150-179, N-Term
Reactivity:	Human, Mouse
Host:	Rabbit
Clonality:	Polyclonal
Conjugate:	This Cullin 2 antibody is un-conjugated
Application:	Western Blotting (WB)

Product Details

Immunogen:	This CUL2 antibody is generated from rabbits immunized with a KLH conjugated synthetic peptide between 150-179 amino acids from the N-terminal region of human CUL2.
Clone:	RB33843
Isotype:	Ig Fraction
Purification:	This antibody is purified through a protein A column, followed by peptide affinity purification.

Target Details

Target:	Cullin 2 (CUL2)
Alternative Name:	CUL2 (CUL2 Products)
Background:	Core component of multiple cullin-RING-based ECS (ElonginB/C-CUL2/5-SOCS-box protein) E3

Target Details

ubiquitin-protein ligase complexes, which mediate the ubiquitination of target proteins. May serve as a rigid scaffold in the complex and may contribute to catalysis through positioning of the substrate and the ubiquitin-conjugating enzyme. The E3 ubiquitin-protein ligase activity of the complex is dependent on the neddylation of the cullin subunit and is inhibited by the association of the deneddylated cullin subunit with TIP120A/CAND1 (By similarity). The functional specificity of the ECS complex depends on the substrate recognition component. ECS(VHL) mediates the ubiquitination of hypoxia-inducible factor (HIF).

Molecular Weight: 86983

Gene ID: 8453

NCBI Accession: [NP_001185706](#), [NP_001185707](#), [NP_001185708](#), [NP_003582](#)

UniProt: [Q13617](#)

Pathways: [M Phase](#), [Asymmetric Protein Localization](#), [SARS-CoV-2 Protein Interactome](#)

Application Details

Application Notes: WB: 1:1000. WB: 1:1000

Restrictions: For Research Use only

Handling

Format: Liquid

Buffer: Purified polyclonal antibody supplied in PBS with 0.09 % (W/V) sodium azide.

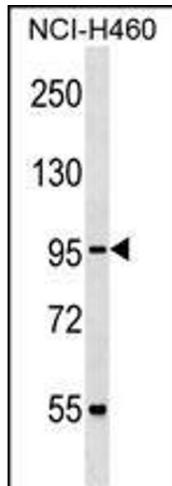
Preservative: Sodium azide

Precaution of Use: This product contains Sodium azide: a POISONOUS AND HAZARDOUS SUBSTANCE which should be handled by trained staff only.

Storage: 4 °C,-20 °C

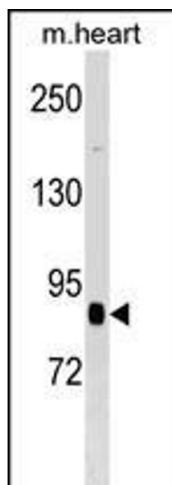
Storage Comment: CUL2 Antibody (N-term) can be refrigerated at 2-8 °C for up to 6 months. For long term storage, keep at -20 °C.

Expiry Date: 6 months



Western Blotting

Image 1. CUL2 Antibody (N-term) (ABIN1539078 and ABIN2848572) western blot analysis in NCI- cell line lysates (35 µg/lane). This demonstrates the CUL2 antibody detected the CUL2 protein (arrow).



Western Blotting

Image 2. CUL2 Antibody (N-term) (ABIN1539078 and ABIN2848572) western blot analysis in mouse heart tissue lysates (35 µg/lane). This demonstrates the CUL2 antibody detected the CUL2 protein (arrow).