

Datasheet for ABIN1539083
anti-BATF2 antibody (N-Term)[Go to Product page](#)

1 Image

Overview

Quantity:	400 µL
Target:	BATF2
Binding Specificity:	AA 16-43, N-Term
Reactivity:	Human
Host:	Rabbit
Clonality:	Polyclonal
Application:	Western Blotting (WB)

Product Details

Immunogen:	This BATF2 antibody is generated from rabbits immunized with a KLH conjugated synthetic peptide between 16-43 amino acids from the N-terminal region of human BATF2.
Clone:	RB37822
Isotype:	Ig Fraction
Purification:	This antibody is purified through a protein A column, followed by peptide affinity purification.

Target Details

Target:	BATF2
Alternative Name:	BATF2 (BATF2 Products)
Background:	MGC20410 belongs to the bZIP family. It contains one bZIP domain. There are two isoforms.
Molecular Weight:	29398

Target Details

Gene ID:	116071
NCBI Accession:	NP_612465
UniProt:	Q8N1L9

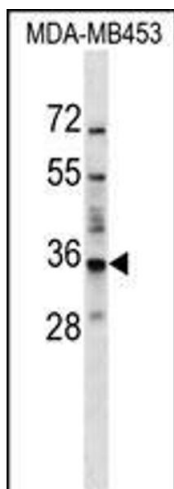
Application Details

Application Notes:	WB: 1:1000
Restrictions:	For Research Use only

Handling

Format:	Liquid
Buffer:	Purified polyclonal antibody supplied in PBS with 0.09 % (W/V) sodium azide.
Preservative:	Sodium azide
Precaution of Use:	This product contains Sodium azide: a POISONOUS AND HAZARDOUS SUBSTANCE which should be handled by trained staff only.
Storage:	4 °C,-20 °C
Storage Comment:	BATF2 Antibody (N-term) can be refrigerated at 2-8 °C for up to 6 months. For long term storage, keep at -20 °C.
Expiry Date:	6 months

Images



Western Blotting

Image 1. BATF2 Antibody (N-term) (ABIN1539083 and ABIN2849110) western blot analysis in MDA-M cell line lysates (35 µg/lane). This demonstrates the BATF2 antibody detected the BATF2 protein (arrow).