

Datasheet for ABIN1539085
anti-AP3B2 antibody (N-Term)[Go to Product page](#)

1 Image

Overview

Quantity:	400 µL
Target:	AP3B2
Binding Specificity:	AA 16-44, N-Term
Reactivity:	Human
Host:	Rabbit
Clonality:	Polyclonal
Conjugate:	This AP3B2 antibody is un-conjugated
Application:	Western Blotting (WB)

Product Details

Immunogen:	This AP3B2 antibody is generated from rabbits immunized with a KLH conjugated synthetic peptide between 16-44 amino acids from the N-terminal region of human AP3B2.
Clone:	RB30367
Isotype:	Ig Fraction
Predicted Reactivity:	M
Purification:	This antibody is purified through a protein A column, followed by peptide affinity purification.

Target Details

Target:	AP3B2
Alternative Name:	AP3B2 (AP3B2 Products)

Target Details

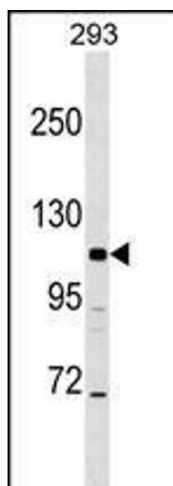
Background:	Adaptor protein-3 (AP3) is a heterotetrameric vesicle-coat protein complex. Some AP3 subunits are ubiquitously expressed, whereas others are expressed exclusively in neurons. The neuron-specific AP3 complex, which includes AP3B2, is thought to serve neuron-specific functions such as neurotransmitter release (Grabner et al., 2006 [PubMed 16788073]).
Molecular Weight:	119059
Gene ID:	8120
NCBI Accession:	NP_001265440 , NP_001265441 , NP_004635
UniProt:	Q13367

Application Details

Application Notes:	WB: 1:1000
Restrictions:	For Research Use only

Handling

Format:	Liquid
Buffer:	Purified polyclonal antibody supplied in PBS with 0.09 % (W/V) sodium azide.
Preservative:	Sodium azide
Precaution of Use:	This product contains Sodium azide: a POISONOUS AND HAZARDOUS SUBSTANCE which should be handled by trained staff only.
Storage:	4 °C, -20 °C
Storage Comment:	AP3B2 Antibody (N-term) can be refrigerated at 2-8 °C for up to 6 months. For long term storage, keep at -20 °C.
Expiry Date:	6 months



Western Blotting

Image 1. B2 Antibody (N-term) (ABIN1539085 and ABIN2848551) western blot analysis in 293 cell line lysates (35 µg/lane). This demonstrates the B2 antibody detected the B2 protein (arrow).