



[Go to Product page](#)

Datasheet for ABIN1539089

anti-CCDC147 antibody (N-Term)

1 Image

Overview

Quantity:	400 µL
Target:	CCDC147
Binding Specificity:	AA 16-45, N-Term
Reactivity:	Human
Host:	Rabbit
Clonality:	Polyclonal
Application:	Western Blotting (WB)

Product Details

Immunogen:	This CCDC147 antibody is generated from rabbits immunized with a KLH conjugated synthetic peptide between 16-45 amino acids from the N-terminal region of human CCDC147.
Clone:	RB27434
Isotype:	Ig Fraction
Purification:	This antibody is purified through a protein A column, followed by peptide affinity purification.

Target Details

Target:	CCDC147
Alternative Name:	CCDC147 (CCDC147 Products)
Background:	The function of this protein remains unknown.
Molecular Weight:	103417

Target Details

Gene ID: 159686

NCBI Accession: [NP_001008723](#)

UniProt: [Q5T655](#)

Application Details

Application Notes: WB: 1:1000

Restrictions: For Research Use only

Handling

Format: Liquid

Buffer: Purified polyclonal antibody supplied in PBS with 0.09 % (W/V) sodium azide.

Preservative: Sodium azide

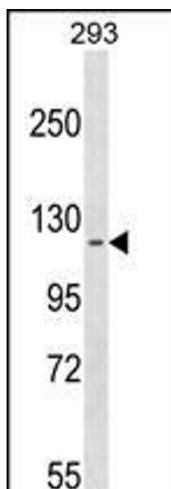
Precaution of Use: This product contains Sodium azide: a POISONOUS AND HAZARDOUS SUBSTANCE which should be handled by trained staff only.

Storage: 4 °C, -20 °C

Storage Comment: CCDC147 Antibody (N-term) can be refrigerated at 2-8 °C for up to 6 months. For long term storage, keep at -20 °C.

Expiry Date: 6 months

Images



Western Blotting

Image 1. CCD Antibody (N-term) (ABIN1539089 and ABIN2849824) western blot analysis in 293 cell line lysates (35 µg/lane). This demonstrates the CCD Antibody detected the CCD protein (arrow).