



[Go to Product page](#)

Datasheet for ABIN1539090

anti-Sema4a antibody (N-Term)

2 Images

Overview

Quantity:	400 µL
Target:	Sema4a
Binding Specificity:	AA 151-180, N-Term
Reactivity:	Human, Mouse
Host:	Rabbit
Clonality:	Polyclonal
Conjugate:	This Sema4a antibody is un-conjugated
Application:	Western Blotting (WB)

Product Details

Immunogen:	This SEMA4A antibody is generated from rabbits immunized with a KLH conjugated synthetic peptide between 151-180 amino acids from the N-terminal region of human SEMA4A.
Clone:	RB35876
Isotype:	Ig Fraction
Purification:	This antibody is purified through a protein A column, followed by peptide affinity purification.

Target Details

Target:	Sema4a
Alternative Name:	SEMA4A (Sema4a Products)
Background:	This gene encodes a member of the semaphorin family of soluble and transmembrane

Target Details

proteins. Semaphorins are involved in numerous functions, including axon guidance, morphogenesis, carcinogenesis, and immunomodulation. The encoded protein is a single-pass type I membrane protein containing an immunoglobulin-like C2-type domain, a PSI domain and a sema domain. It inhibits axonal extension by providing local signals to specify territories inaccessible for growing axons. It is an activator of T-cell-mediated immunity and suppresses vascular endothelial growth factor (VEGF)-mediated endothelial cell migration and proliferation in vitro and angiogenesis in vivo. Mutations in this gene are associated with retinal degenerative diseases including retinitis pigmentosa type 35 (RP35) and cone-rod dystrophy type 10 (CORD10). Multiple alternatively spliced transcript variants encoding different isoforms have been identified.

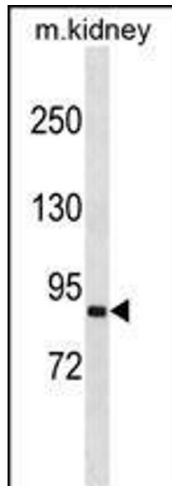
Molecular Weight:	83574
Gene ID:	64218
NCBI Accession:	NP_001180229 , NP_001180230 , NP_001180231 , NP_071762
UniProt:	Q9H3S1

Application Details

Application Notes:	WB: 1:500. WB: 1:1000
Restrictions:	For Research Use only

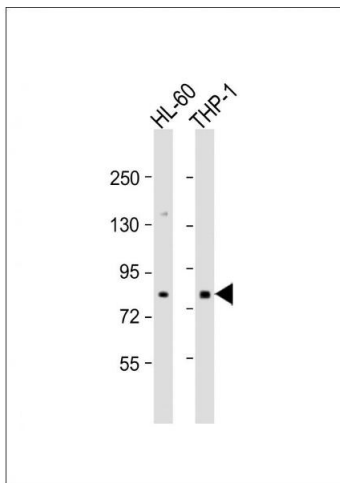
Handling

Format:	Liquid
Buffer:	Purified polyclonal antibody supplied in PBS with 0.09 % (W/V) sodium azide.
Preservative:	Sodium azide
Precaution of Use:	This product contains Sodium azide: a POISONOUS AND HAZARDOUS SUBSTANCE which should be handled by trained staff only.
Storage:	4 °C, -20 °C
Storage Comment:	SEMA4A Antibody (N-term) can be refrigerated at 2-8 °C for up to 6 months. For long term storage, keep at -20 °C.
Expiry Date:	6 months



Western Blotting

Image 1. SEA Antibody (N-term) (ABIN1539090 and ABIN2848472) western blot analysis in mouse kidney tissue lysates (35 µg/lane). This demonstrates the SEA antibody detected the SEA protein (arrow).



Western Blotting

Image 2. All lanes : Anti-SEA Antibody (N-term) at 1:500 dilution Lane 1: HL-60 whole cell lysate Lane 2: THP-1 whole cell lysate Lysates/proteins at 20 µg per lane. Secondary Goat Anti-Rabbit IgG, (H+L), Peroxidase conjugated at 1/10000 dilution. Predicted band size : 84 kDa Blocking/Dilution buffer: 5 % NFDN/TBST.