

Datasheet for ABIN1539101  
**anti-ANP32B antibody (N-Term)**[Go to Product page](#)

## 1 Image

## Overview

Quantity:	400 µL
Target:	ANP32B
Binding Specificity:	AA 17-45, N-Term
Reactivity:	Human
Host:	Rabbit
Clonality:	Polyclonal
Conjugate:	This ANP32B antibody is un-conjugated
Application:	Western Blotting (WB)

## Product Details

Immunogen:	This ANP32B antibody is generated from rabbits immunized with a KLH conjugated synthetic peptide between 17-45 amino acids from the N-terminal region of human ANP32B.
Clone:	RB36751
Isotype:	Ig Fraction
Predicted Reactivity:	B, Sh
Purification:	This antibody is purified through a protein A column, followed by peptide affinity purification.

## Target Details

Target:	ANP32B
Alternative Name:	ANP32B ( <a href="#">ANP32B Products</a> )

## Target Details

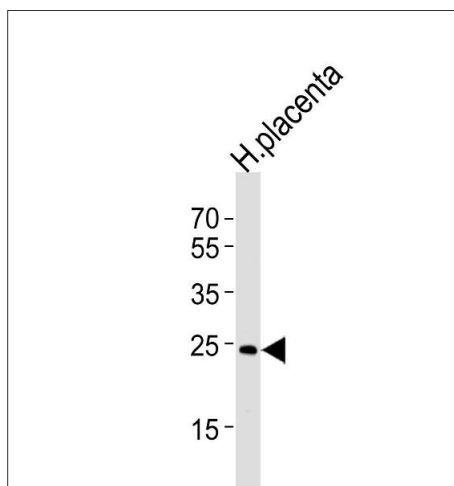
Background:	Multifunctional protein working as a cell cycle progression factor as well as a cell survival factor. Required for the progression from the G1 to the S phase. Anti-apoptotic protein which functions as a caspase-3 inhibitor. Has no phosphatase 2A (PP2A) inhibitor activity (By similarity).
Molecular Weight:	28788
Gene ID:	10541
NCBI Accession:	<a href="#">NP_006392</a>
UniProt:	<a href="#">Q92688</a>

## Application Details

Application Notes:	WB: 1:1000
Restrictions:	For Research Use only

## Handling

Format:	Liquid
Buffer:	Purified polyclonal antibody supplied in PBS with 0.09 % (W/V) sodium azide.
Preservative:	Sodium azide
Precaution of Use:	This product contains Sodium azide: a POISONOUS AND HAZARDOUS SUBSTANCE which should be handled by trained staff only.
Storage:	4 °C, -20 °C
Storage Comment:	ANP32B Antibody (N-term) can be refrigerated at 2-8 °C for up to 6 months. For long term storage, keep at -20 °C.
Expiry Date:	6 months



#### Western Blotting

**Image 1.** Western blot analysis of lysate from human placenta tissue lysate, using ANP32B Antibody (N-term) (ABIN1539101 and ABIN2848657). (ABIN1539101 and ABIN2848657) was diluted at 1:1000 at each lane. A goat anti-rabbit IgG H&L(HRP) at 1:5000 dilution was used as the secondary antibody. Lysate at 35 µg per lane.