

Datasheet for ABIN1539107
anti-NOLC1 antibody (N-Term)[Go to Product page](#)

1 Image

Overview

Quantity:	400 µL
Target:	NOLC1
Binding Specificity:	AA 162-191, N-Term
Reactivity:	Human
Host:	Rabbit
Clonality:	Polyclonal
Application:	Western Blotting (WB)

Product Details

Immunogen:	This NOLC1 antibody is generated from rabbits immunized with a KLH conjugated synthetic peptide between 162-191 amino acids from the N-terminal region of human NOLC1.
Clone:	RB36705
Isotype:	Ig Fraction
Purification:	This antibody is purified through a protein A column, followed by peptide affinity purification.

Target Details

Target:	NOLC1
Alternative Name:	NOLC1 (NOLC1 Products)
Background:	Related to nucleologenesis, may play a role in the maintenance of the fundamental structure of the fibrillar center and dense fibrillar component in the nucleolus. It has intrinsic GTPase and ATPase activities. May play an important role in transcription catalyzed by RNA polymerase I.

Target Details

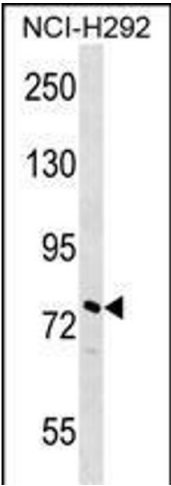
Molecular Weight:	73603
Gene ID:	9221
NCBI Accession:	NP_004732
UniProt:	Q14978
Pathways:	Regulation of G-Protein Coupled Receptor Protein Signaling

Application Details

Application Notes:	WB: 1:1000
Restrictions:	For Research Use only

Handling

Format:	Liquid
Buffer:	Purified polyclonal antibody supplied in PBS with 0.09 % (W/V) sodium azide.
Preservative:	Sodium azide
Precaution of Use:	This product contains Sodium azide: a POISONOUS AND HAZARDOUS SUBSTANCE which should be handled by trained staff only.
Storage:	4 °C, -20 °C
Storage Comment:	NOLC1 Antibody (N-term) can be refrigerated at 2-8 °C for up to 6 months. For long term storage, keep at -20 °C.
Expiry Date:	6 months



Western Blotting

Image 1. NOLC1 Antibody (N-term) (ABIN1539107 and ABIN2848640) western blot analysis in NCI- cell line lysates (35 µg/lane). This demonstrates the NOLC1 antibody detected the NOLC1 protein (arrow).