



[Go to Product page](#)

Datasheet for ABIN1539108
anti-KAL1 antibody (N-Term)

1 Image

Overview

Quantity:	400 µL
Target:	KAL1
Binding Specificity:	AA 166-194, N-Term
Reactivity:	Human
Host:	Rabbit
Clonality:	Polyclonal
Application:	Western Blotting (WB)

Product Details

Immunogen:	This KAL1 antibody is generated from rabbits immunized with a KLH conjugated synthetic peptide between 166-194 amino acids from the N-terminal region of human KAL1.
Clone:	RB39497
Isotype:	Ig Fraction
Purification:	This antibody is purified through a protein A column, followed by peptide affinity purification.

Target Details

Target:	KAL1
Alternative Name:	KAL1 (KAL1 Products)
Background:	Mutations in this gene cause the X-linked Kallmann syndrome. The encoded protein is similar in sequence to proteins known to function in neural cell adhesion and axonal migration. In addition, this cell surface protein is N-glycosylated and may have anti-protease activity.

Target Details

Molecular Weight:	76112
Gene ID:	3730
NCBI Accession:	NP_000207
UniProt:	P23352

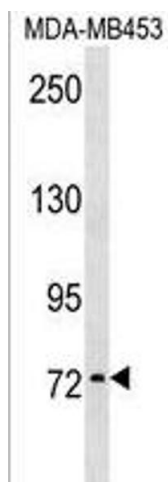
Application Details

Application Notes:	WB: 1:1000
Restrictions:	For Research Use only

Handling

Format:	Liquid
Buffer:	Purified polyclonal antibody supplied in PBS with 0.09 % (W/V) sodium azide.
Preservative:	Sodium azide
Precaution of Use:	This product contains Sodium azide: a POISONOUS AND HAZARDOUS SUBSTANCE which should be handled by trained staff only.
Storage:	4 °C,-20 °C
Storage Comment:	KAL1 Antibody (N-term) can be refrigerated at 2-8 °C for up to 6 months. For long term storage, keep at -20 °C.
Expiry Date:	6 months

Images



Western Blotting

Image 1. KAL1 Antibody (N-term) (ABIN1539108 and ABIN2838189) western blot analysis in MDA-M cell line lysates (35 µg/lane). This demonstrates the KAL1 antibody detected the KAL1 protein (arrow).