

Datasheet for ABIN1539136  
**anti-SEMA6D antibody (N-Term)**[Go to Product page](#)

## 2 Images

## Overview

Quantity:	400 µL
Target:	SEMA6D
Binding Specificity:	AA 19-48, N-Term
Reactivity:	Human
Host:	Rabbit
Clonality:	Polyclonal
Application:	Western Blotting (WB)

## Product Details

Immunogen:	This SEMA6D antibody is generated from rabbits immunized with a KLH conjugated synthetic peptide between 19-48 amino acids from the N-terminal region of human SEMA6D.
Clone:	RB32830
Isotype:	Ig Fraction
Purification:	This antibody is purified through a protein A column, followed by peptide affinity purification.

## Target Details

Target:	SEMA6D
Alternative Name:	SEMA6D ( <a href="#">SEMA6D Products</a> )
Background:	Semaphorins are a large family, including both secreted and membrane associated proteins, many of which have been implicated as inhibitors or chemorepellents in axon pathfinding, fasciculation and branching, and target selection. All semaphorins possess a semaphorin

## Target Details

(Sema) domain and a PSI domain (found in plexins, semaphorins and integrins) in the N-terminal extracellular portion. Additional sequence motifs C-terminal to the semaphorin domain allow classification into distinct subfamilies. Results demonstrate that transmembrane semaphorins, like the secreted ones, can act as repulsive axon guidance cues. This gene encodes a class 6 vertebrate transmembrane semaphorin that demonstrates alternative splicing. Several transcript variants have been identified and expression of the distinct encoded isoforms is thought to be regulated in a tissue- and development-dependent manner. [provided by RefSeq].

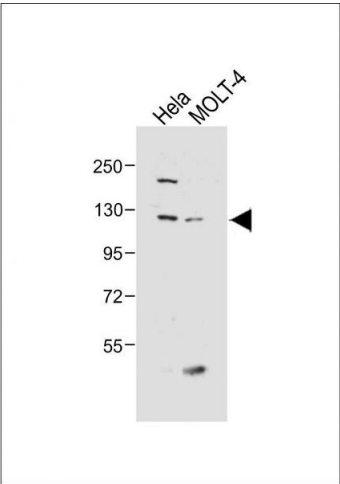
Molecular Weight:	119872
Gene ID:	80031
NCBI Accession:	<a href="#">NP_001185928</a> , <a href="#">NP_065909</a> , <a href="#">NP_079242</a> , <a href="#">NP_705869</a> , <a href="#">NP_705870</a> , <a href="#">NP_705871</a> , <a href="#">NP_705872</a>
UniProt:	<a href="#">Q8NFY4</a>
Pathways:	<a href="#">Smooth Muscle Cell Migration</a>

## Application Details

Application Notes:	WB: 1:2000. WB: 1:1000
Restrictions:	For Research Use only

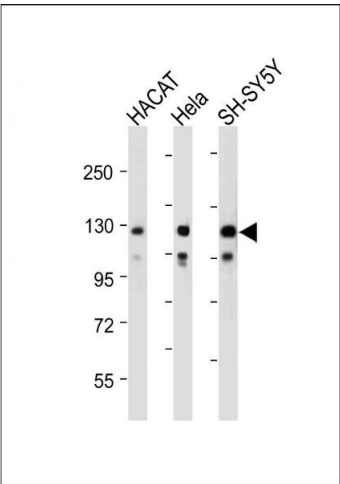
## Handling

Format:	Liquid
Buffer:	Purified polyclonal antibody supplied in PBS with 0.09 % (W/V) sodium azide.
Preservative:	Sodium azide
Precaution of Use:	This product contains Sodium azide: a POISONOUS AND HAZARDOUS SUBSTANCE which should be handled by trained staff only.
Storage:	4 °C, -20 °C
Storage Comment:	SEMA6D Antibody (N-term) can be refrigerated at 2-8 °C for up to 6 months. For long term storage, keep at -20 °C.
Expiry Date:	6 months



#### Western Blotting

**Image 1.** All lanes : Anti-SED Antibody (N-term) at 1:1000 dilution Lane 1: HeLa whole cell lysate Lane 2: MOLT-4 whole cell lysate Lysates/proteins at 20 µg per lane. Secondary Goat Anti-Rabbit IgG, (H+L), Peroxidase conjugated at 1/10000 dilution. Predicted band size : 120 kDa Blocking/Dilution buffer: 5 % NFDM/TBST.



#### Western Blotting

**Image 2.** All lanes : Anti-SED Antibody (N-term) at 1:2000 dilution Lane 1: HACAT whole cell lysate Lane 2: HeLa whole cell lysate Lane 3: SH-SY5Y whole cell lysate Lysates/proteins at 20 µg per lane. Secondary Goat Anti-Rabbit IgG, (H+L), Peroxidase conjugated at 1/10000 dilution. Predicted band size : 120 kDa Blocking/Dilution buffer: 5 % NFDM/TBST.