

Datasheet for ABIN1539142
anti-TCF25 antibody (N-Term)

2 Images

[Go to Product page](#)

Overview

Quantity:	400 µL
Target:	TCF25
Binding Specificity:	AA 186-215, N-Term
Reactivity:	Human
Host:	Rabbit
Clonality:	Polyclonal
Application:	Western Blotting (WB), Immunofluorescence (IF)

Product Details

Immunogen:	This TCF25 antibody is generated from rabbits immunized with a KLH conjugated synthetic peptide between 186-215 amino acids from the N-terminal region of human TCF25.
Clone:	RB37371
Isotype:	Ig Fraction
Predicted Reactivity:	M
Purification:	This antibody is purified through a protein A column, followed by peptide affinity purification.

Target Details

Target:	TCF25
Alternative Name:	TCF25 (TCF25 Products)
Background:	TCF25 is a member of the basic helix-loop-helix (bHLH) family of transcription factors that are

Target Details

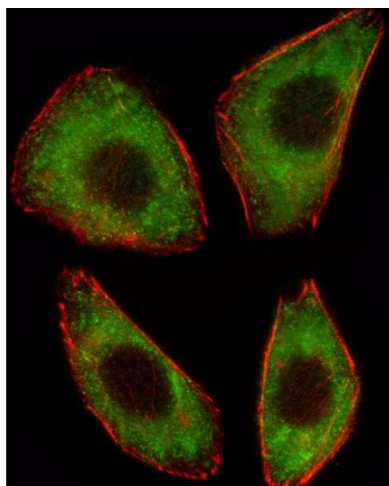
	important in embryonic development (Steen and Lindholm, 2008 [PubMed 18068114]).[supplied by OMIM].
Molecular Weight:	76667
Gene ID:	22980
NCBI Accession:	NP_055787
UniProt:	Q9BQ70

Application Details

Application Notes:	IF: 1:10~50. WB: 1:1000
Restrictions:	For Research Use only

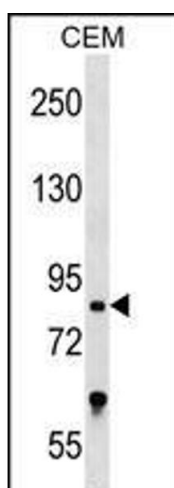
Handling

Format:	Liquid
Buffer:	Purified polyclonal antibody supplied in PBS with 0.09 % (W/V) sodium azide.
Preservative:	Sodium azide
Precaution of Use:	This product contains Sodium azide: a POISONOUS AND HAZARDOUS SUBSTANCE which should be handled by trained staff only.
Storage:	4 °C,-20 °C
Storage Comment:	TCF25 Antibody (N-term) can be refrigerated at 2-8 °C for up to 6 months. For long term storage, keep at -20 °C.
Expiry Date:	6 months



Immunofluorescence

Image 1. Fluorescent image of A549 cell stained with TCF25 Antibody (N-term) (ABIN1539142 and ABIN2848917). A549 cells were fixed with 4 % PFA (20 min), permeabilized with Triton X-100 (0.1 %, 10 min), then incubated with TCF25 primary antibody (1:25, 1 h at 37 °C). For secondary antibody, Alexa Fluor® 488 conjugated donkey anti-rabbit antibody (green) was used (1:400, 50 min at 37 °C). Cytoplasmic actin was counterstained with Alexa Fluor® 555 (red) conjugated Phalloidin (7 units/mL, 1 h at 37 °C). TCF25 immunoreactivity is localized to Cytoplasm significantly.



Western Blotting

Image 2. TCF25 Antibody (N-term) (ABIN1539142 and ABIN2848917) western blot analysis in CEM cell line lysates (35 µg/lane). This demonstrates the TCF25 antibody detected the TCF25 protein (arrow).