



[Go to Product page](#)

Datasheet for ABIN1539145
anti-KIRREL2 antibody (N-Term)

1 Image

Overview

Quantity:	400 µL
Target:	KIRREL2
Binding Specificity:	AA 190-216, N-Term
Reactivity:	Human
Host:	Rabbit
Clonality:	Polyclonal
Application:	Western Blotting (WB)

Product Details

Immunogen:	This KIRREL2 antibody is generated from rabbits immunized with a KLH conjugated synthetic peptide between 190-216 amino acids from the N-terminal region of human KIRREL2.
Clone:	RB37417
Isotype:	Ig Fraction
Predicted Reactivity:	M
Purification:	This antibody is purified through a protein A column, followed by peptide affinity purification.

Target Details

Target:	KIRREL2
Alternative Name:	KIRREL2 (KIRREL2 Products)
Background:	KIRREL2 is an immunoglobulin super family gene, it has been found to be expressed in beta

Target Details

cells of pancreatic islets.

Molecular Weight: 75092

Gene ID: 84063

NCBI Accession: [NP_115499](#), [NP_954648](#), [NP_954649](#)

UniProt: [Q6UWL6](#)

Application Details

Application Notes: WB: 1:1000

Restrictions: For Research Use only

Handling

Format: Liquid

Buffer: Purified polyclonal antibody supplied in PBS with 0.09 % (W/V) sodium azide.

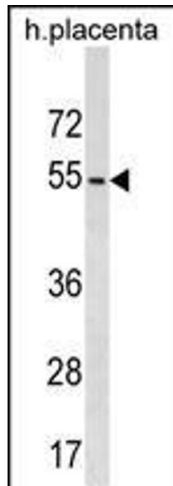
Preservative: Sodium azide

Precaution of Use: This product contains Sodium azide: a POISONOUS AND HAZARDOUS SUBSTANCE which should be handled by trained staff only.

Storage: 4 °C, -20 °C

Storage Comment: KIRREL2 Antibody (N-term) can be refrigerated at 2-8 °C for up to 6 months. For long term storage, keep at -20 °C.

Expiry Date: 6 months



Western Blotting

Image 1. KIRREL2 Antibody (N-term) (ABIN1539145 and ABIN2850125) western blot analysis in human placenta tissue lysates (35 µg/lane). This demonstrates the KIRREL2 antibody detected the KIRREL2 protein (arrow).