

Datasheet for ABIN1539149
anti-CLCNKA antibody (N-Term)[Go to Product page](#)

1 Image

Overview

Quantity:	400 µL
Target:	CLCNKA
Binding Specificity:	AA 20-47, N-Term
Reactivity:	Human
Host:	Rabbit
Clonality:	Polyclonal
Application:	Western Blotting (WB)

Product Details

Immunogen:	This CLCNKA antibody is generated from rabbits immunized with a KLH conjugated synthetic peptide between 20-47 amino acids from the N-terminal region of human CLCNKA.
Clone:	RB37056
Isotype:	Ig Fraction
Purification:	This antibody is purified through a protein A column, followed by peptide affinity purification.

Target Details

Target:	CLCNKA
Alternative Name:	CLCNKA (CLCNKA Products)
Background:	This gene is a member of the CLC family of voltage-gated chloride channels. The encoded protein is predicted to have 12 transmembrane domains, and requires a beta subunit called barttin to form a functional channel. It is thought to function in salt reabsorption in the kidney

Target Details

and potassium recycling in the inner ear. The gene is highly similar to CLCNKB, which is located 10 kb downstream from this gene. Multiple transcript variants encoding different isoforms have been found for this gene. [provided by RefSeq].

Molecular Weight: 75285

Gene ID: 1187

NCBI Accession: [NP_001036169](#), [NP_001244068](#), [NP_004061](#)

UniProt: [P51800](#)

Pathways: [Response to Water Deprivation](#)

Application Details

Application Notes: WB: 1:1000

Restrictions: For Research Use only

Handling

Format: Liquid

Buffer: Purified polyclonal antibody supplied in PBS with 0.09 % (W/V) sodium azide.

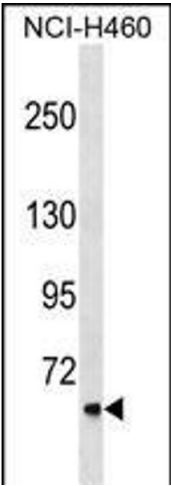
Preservative: Sodium azide

Precaution of Use: This product contains Sodium azide: a POISONOUS AND HAZARDOUS SUBSTANCE which should be handled by trained staff only.

Storage: 4 °C, -20 °C

Storage Comment: CLCNKA Antibody (N-term) can be refrigerated at 2-8 °C for up to 6 months. For long term storage, keep at -20 °C.

Expiry Date: 6 months



Western Blotting

Image 1. CLCNKA Antibody (N-term) (ABIN1539149 and ABIN2849043) western blot analysis in NCI- cell line lysates (35 µg/lane). This demonstrates the CLCNKA antibody detected the CLCNKA protein (arrow).