

Datasheet for ABIN1539150
anti-SFMBT1 antibody (N-Term)[Go to Product page](#)

1 Image

Overview

Quantity:	400 µL
Target:	SFMBT1
Binding Specificity:	AA 20-47, N-Term
Reactivity:	Human
Host:	Rabbit
Clonality:	Polyclonal
Application:	Western Blotting (WB)

Product Details

Immunogen:	This SFMBT1 antibody is generated from rabbits immunized with a KLH conjugated synthetic peptide between 20-47 amino acids from the N-terminal region of human SFMBT1.
Clone:	RB38553
Isotype:	Ig Fraction
Purification:	This antibody is purified through a protein A column, followed by peptide affinity purification.

Target Details

Target:	SFMBT1
Alternative Name:	SFMBT1 (SFMBT1 Products)
Background:	This gene shares high similarity with the Drosophila Scm (sex comb on midleg) gene. It encodes a protein which contains four malignant brain tumor repeat (mbt) domains and may be involved in antigen recognition. Several alternative splice variants that encode the same

Target Details

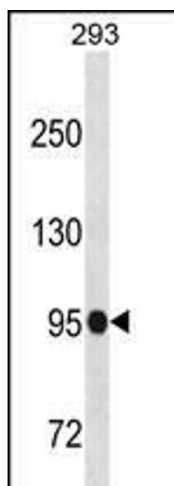
	protein have been characterized. [provided by RefSeq].
Molecular Weight:	98141
Gene ID:	51460
NCBI Accession:	NP_057413
UniProt:	Q9UHH3

Application Details

Application Notes:	WB: 1:1000
Restrictions:	For Research Use only

Handling

Format:	Liquid
Buffer:	Purified polyclonal antibody supplied in PBS with 0.09 % (W/V) sodium azide.
Preservative:	Sodium azide
Precaution of Use:	This product contains Sodium azide: a POISONOUS AND HAZARDOUS SUBSTANCE which should be handled by trained staff only.
Storage:	4 °C,-20 °C
Storage Comment:	SFMBT1 Antibody (N-term) can be refrigerated at 2-8 °C for up to 6 months. For long term storage, keep at -20 °C.
Expiry Date:	6 months



Western Blotting

Image 1. SFMBT1 Antibody (N-term) (ABIN1539150 and ABIN2849915) western blot analysis in 293 cell line lysates (35 µg/lane). This demonstrates the SFMBT1 Antibody detected the SFMBT1 protein (arrow).