

Datasheet for ABIN1539155
anti-CFC1B antibody (N-Term)[Go to Product page](#)

1 Image

Overview

Quantity:	400 µL
Target:	CFC1B
Binding Specificity:	AA 20-48, N-Term
Reactivity:	Human
Host:	Rabbit
Clonality:	Polyclonal
Application:	Western Blotting (WB)

Product Details

Immunogen:	This CFC1B antibody is generated from rabbits immunized with a KLH conjugated synthetic peptide between 20-48 amino acids from the N-terminal region of human CFC1B.
Clone:	RB33981
Isotype:	Ig Fraction
Purification:	This antibody is purified through a protein A column, followed by peptide affinity purification.

Target Details

Target:	CFC1B
Alternative Name:	CFC1B (CFC1B Products)
Background:	CFC1 is involved in the correct establishment of the left-right axis. It may play a role in mesoderm and/or neural patterning during gastrulation.

Target Details

Molecular Weight:	24642
NCBI Accession:	NP_001072998
UniProt:	P0CG36

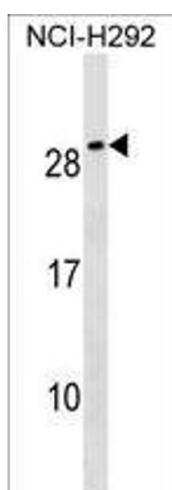
Application Details

Application Notes:	WB: 1:1000
Restrictions:	For Research Use only

Handling

Format:	Liquid
Buffer:	Purified polyclonal antibody supplied in PBS with 0.09 % (W/V) sodium azide.
Preservative:	Sodium azide
Precaution of Use:	This product contains Sodium azide: a POISONOUS AND HAZARDOUS SUBSTANCE which should be handled by trained staff only.
Storage:	4 °C,-20 °C
Storage Comment:	CFC1B Antibody (N-term) can be refrigerated at 2-8 °C for up to 6 months. For long term storage, keep at -20 °C.
Expiry Date:	6 months

Images



Western Blotting

Image 1. CFC1B Antibody (N-term) (ABIN1539155 and ABIN2850514) western blot analysis in NCI- cell line lysates (35 µg/lane). This demonstrates the CFC1B antibody detected the CFC1B protein (arrow).