

Datasheet for ABIN1539162
anti-KIF20A antibody (N-Term)



[Go to Product page](#)

1 Image

Overview

Quantity:	400 µL
Target:	KIF20A
Binding Specificity:	AA 198-226, N-Term
Reactivity:	Human
Host:	Rabbit
Clonality:	Polyclonal
Application:	Western Blotting (WB)

Product Details

Immunogen:	This KIF20A antibody is generated from rabbits immunized with a KLH conjugated synthetic peptide between 198-226 amino acids from the N-terminal region of human KIF20A.
Clone:	RB36811
Isotype:	Ig Fraction
Predicted Reactivity:	M
Purification:	This antibody is purified through a protein A column, followed by peptide affinity purification.

Target Details

Target:	KIF20A
Alternative Name:	KIF20A (KIF20A Products)
Background:	KIF20A interacts with guanosine triphosphate (GTP)-bound forms of RAB6A and RAB6B. May

Target Details

act as a motor required for the retrograde RAB6 regulated transport of Golgi membranes and associated vesicles along microtubules. Has a microtubule plus end-directed motility (By similarity).

Molecular Weight: 100278

Gene ID: 10112

NCBI Accession: [NP_005724](#)

UniProt: [O95235](#)

Application Details

Application Notes: WB: 1:1000

Restrictions: For Research Use only

Handling

Format: Liquid

Buffer: Purified polyclonal antibody supplied in PBS with 0.09 % (W/V) sodium azide.

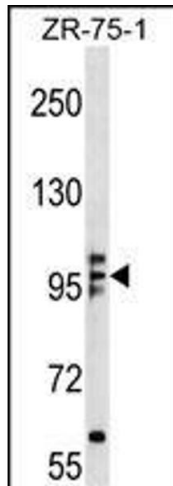
Preservative: Sodium azide

Precaution of Use: This product contains Sodium azide: a POISONOUS AND HAZARDOUS SUBSTANCE which should be handled by trained staff only.

Storage: 4 °C, -20 °C

Storage Comment: KIF20A Antibody (N-term) can be refrigerated at 2-8 °C for up to 6 months. For long term storage, keep at -20 °C.

Expiry Date: 6 months



Western Blotting

Image 1. KIF20A Antibody (N-term) (ABIN1539162 and ABIN2848683) western blot analysis in ZR-75-1 cell line lysates (35 µg/lane). This demonstrates the KIF20A antibody detected the KIF20A protein (arrow).