



Datasheet for ABIN1539164
anti-HEPHL1 antibody (N-Term)



[Go to Product page](#)

1 Image

Overview

Quantity:	400 µL
Target:	HEPHL1
Binding Specificity:	AA 199-225, N-Term
Reactivity:	Human
Host:	Rabbit
Clonality:	Polyclonal
Application:	Western Blotting (WB)

Product Details

Immunogen:	This HEPHL1 antibody is generated from rabbits immunized with a KLH conjugated synthetic peptide between 199-225 amino acids from the N-terminal region of human HEPHL1.
Clone:	RB38811
Isotype:	Ig Fraction
Purification:	This antibody is purified through a protein A column, followed by peptide affinity purification.

Target Details

Target:	HEPHL1
Alternative Name:	HEPHL1 (HEPHL1 Products)
Background:	HEPHL1 may function as a ferroxidase and may be involved in copper transport and homeostasis (By similarity).

Target Details

Molecular Weight:	131603
Gene ID:	341208
NCBI Accession:	NP_001092142
UniProt:	Q6MZM0

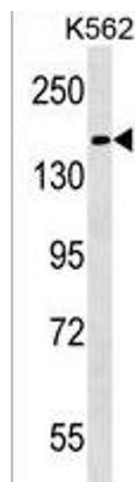
Application Details

Application Notes:	WB: 1:1000
Restrictions:	For Research Use only

Handling

Format:	Liquid
Buffer:	Purified polyclonal antibody supplied in PBS with 0.09 % (W/V) sodium azide.
Preservative:	Sodium azide
Precaution of Use:	This product contains Sodium azide: a POISONOUS AND HAZARDOUS SUBSTANCE which should be handled by trained staff only.
Storage:	4 °C, -20 °C
Storage Comment:	HEPHL1 Antibody (N-term) can be refrigerated at 2-8 °C for up to 6 months. For long term storage, keep at -20 °C.
Expiry Date:	6 months

Images



Western Blotting

Image 1. HEPHL1 Antibody (N-term) (ABIN1539164 and ABIN2850036) western blot analysis in K562 cell line lysates (35 µg/lane). This demonstrates the HEPHL1 antibody detected the HEPHL1 protein (arrow).