



[Go to Product page](#)

Datasheet for ABIN1539168  
**anti-RPL10A antibody (N-Term)**

1 Image

### Overview

Quantity:	400 µL
Target:	RPL10A
Binding Specificity:	AA 3-31, N-Term
Reactivity:	Human
Host:	Rabbit
Clonality:	Polyclonal
Application:	Western Blotting (WB)

### Product Details

Immunogen:	This RPL10A antibody is generated from rabbits immunized with a KLH conjugated synthetic peptide between 3-31 amino acids from the N-terminal region of human RPL10A.
Clone:	RB37030
Isotype:	Ig Fraction
Predicted Reactivity:	B, Pr, M, Rat
Purification:	This antibody is purified through a protein A column, followed by peptide affinity purification.

### Target Details

Target:	RPL10A
Alternative Name:	RPL10A ( <a href="#">RPL10A Products</a> )
Background:	Ribosomes, the organelles that catalyze protein synthesis, consist of a small 40S subunit and a

## Target Details

---

large 60S subunit. Together these subunits are composed of 4 RNA species and approximately 80 structurally distinct proteins. This gene encodes a ribosomal protein that is a component of the 60S subunit. The protein belongs to the L1P family of ribosomal proteins. It is located in the cytoplasm. The expression of this gene is downregulated in the thymus by cyclosporin-A (CsA), an immunosuppressive drug. Studies in mice have shown that the expression of the ribosomal protein L10a gene is downregulated in neural precursor cells during development. This gene previously was referred to as NEDD6 (neural precursor cell expressed, developmentally downregulated 6), but it has been renamed RPL10A (ribosomal protein 10a). As is typical for genes encoding ribosomal proteins, there are multiple processed pseudogenes of this gene dispersed through the genome. [provided by RefSeq].

---

Molecular Weight: 24831

---

Gene ID: 4736

---

NCBI Accession: [NP\\_009035](#)

---

UniProt: [P62906](#)

## Application Details

---

Application Notes: WB: 1:1000

Restrictions: For Research Use only

## Handling

---

Format: Liquid

Buffer: Purified polyclonal antibody supplied in PBS with 0.09 % (W/V) sodium azide.

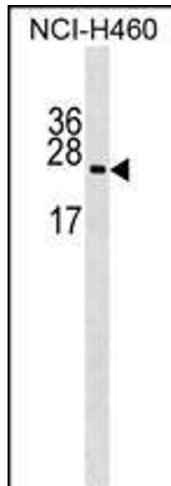
Preservative: Sodium azide

Precaution of Use: This product contains Sodium azide: a POISONOUS AND HAZARDOUS SUBSTANCE which should be handled by trained staff only.

Storage: 4 °C, -20 °C

Storage Comment: RPL10A Antibody (N-term) can be refrigerated at 2-8 °C for up to 6 months. For long term storage, keep at -20 °C.

Expiry Date: 6 months



### Western Blotting

**Image 1.** RPL10A Antibody (N-term) (ABIN1539168 and ABIN2848742) western blot analysis in NCI- cell line lysates (35 µg/lane). This demonstrates the RPL10A antibody detected the RPL10A protein (arrow).