



[Go to Product page](#)

Datasheet for ABIN1539181  
**anti-PRR23A antibody (N-Term)**

1 Image

Overview

Quantity:	400 µL
Target:	PRR23A
Binding Specificity:	AA 21-47, N-Term
Reactivity:	Human
Host:	Rabbit
Clonality:	Polyclonal
Conjugate:	This PRR23A antibody is un-conjugated
Application:	Western Blotting (WB)

Product Details

Immunogen:	This PRR23A antibody is generated from rabbits immunized with a KLH conjugated synthetic peptide between 21-47 amino acids from the N-terminal region of human PRR23A.
Clone:	RB39637
Isotype:	Ig Fraction
Purification:	This antibody is purified through a protein A column, followed by peptide affinity purification.

Target Details

Target:	PRR23A
Alternative Name:	PRR23A ( <a href="#">PRR23A Products</a> )
Background:	The function of this protein remains unknown.

## Target Details

Molecular Weight:	28155
Gene ID:	729627
NCBI Accession:	<a href="#">NP_001128131</a>
UniProt:	<a href="#">A6NEV1</a>

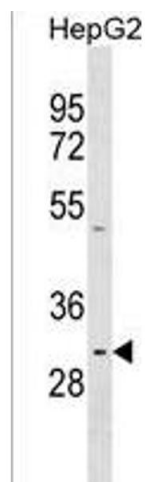
## Application Details

Application Notes:	WB: 1:1000
Restrictions:	For Research Use only

## Handling

Format:	Liquid
Buffer:	Purified polyclonal antibody supplied in PBS with 0.09 % (W/V) sodium azide.
Preservative:	Sodium azide
Precaution of Use:	This product contains Sodium azide: a POISONOUS AND HAZARDOUS SUBSTANCE which should be handled by trained staff only.
Storage:	4 °C, -20 °C
Storage Comment:	PRR23A Antibody (N-term) can be refrigerated at 2-8 °C for up to 6 months. For long term storage, keep at -20 °C.
Expiry Date:	6 months

## Images



### Western Blotting

**Image 1.** PRR23A Antibody (N-term) (ABIN1539181 and ABIN2850412) western blot analysis in HepG2 cell line lysates (35 µg/lane). This demonstrates the PRR23A antibody detected the PRR23A protein (arrow).