

Datasheet for ABIN1539182
anti-MS4A5 antibody (N-Term)[Go to Product page](#)

1 Image

Overview

Quantity:	400 µL
Target:	MS4A5
Binding Specificity:	AA 22-48, N-Term
Reactivity:	Human
Host:	Rabbit
Clonality:	Polyclonal
Application:	Western Blotting (WB)

Product Details

Immunogen:	This MS4A5 antibody is generated from rabbits immunized with a KLH conjugated synthetic peptide between 22-48 amino acids from the N-terminal region of human MS4A5.
Clone:	RB38304
Isotype:	Ig Fraction
Purification:	This antibody is purified through a protein A column, followed by peptide affinity purification.

Target Details

Target:	MS4A5
Alternative Name:	MS4A5 (MS4A5 Products)
Background:	This gene encodes a member of the membrane-spanning 4A gene family. Members of this nascent protein family are characterized by common structural features and similar intron/exon splice boundaries and display unique expression patterns among hematopoietic

Target Details

cells and nonlymphoid tissues. Though this member is not expressed in hematopoietic cells specifically, it may be involved in signal transduction like many of its related family members. The gene encoding this protein is localized to 11q12, among a cluster of family members.

Molecular Weight: 22283

Gene ID: 64232

NCBI Accession: [NP_076434](#)

UniProt: [Q9H3V2](#)

Application Details

Application Notes: WB: 1:1000

Restrictions: For Research Use only

Handling

Format: Liquid

Buffer: Purified polyclonal antibody supplied in PBS with 0.09 % (W/V) sodium azide.

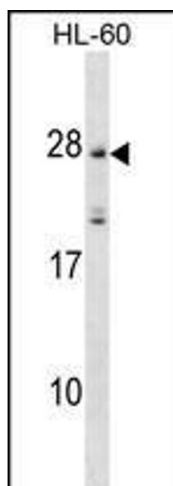
Preservative: Sodium azide

Precaution of Use: This product contains Sodium azide: a POISONOUS AND HAZARDOUS SUBSTANCE which should be handled by trained staff only.

Storage: 4 °C, -20 °C

Storage Comment: MS4A5 Antibody (N-term) can be refrigerated at 2-8 °C for up to 6 months. For long term storage, keep at -20 °C.

Expiry Date: 6 months



Western Blotting

Image 1. MS4A5 Antibody (N-term) (ABIN1539182 and ABIN2849777) western blot analysis in HL-60 cell line lysates (35 µg/lane). This demonstrates the MS4A5 antibody detected the MS4A5 protein (arrow).