

Datasheet for ABIN1539183  
**anti-PPIE antibody (N-Term)**[Go to Product page](#)

## 1 Image

## Overview

Quantity:	400 µL
Target:	PPIE
Binding Specificity:	AA 22-49, N-Term
Reactivity:	Human
Host:	Rabbit
Clonality:	Polyclonal
Application:	Western Blotting (WB)

## Product Details

Immunogen:	This PPIE antibody is generated from rabbits immunized with a KLH conjugated synthetic peptide between 22-49 amino acids from the N-terminal region of human PPIE.
Clone:	RB36175
Isotype:	Ig Fraction
Predicted Reactivity:	B, M
Purification:	This antibody is purified through a protein A column, followed by peptide affinity purification.

## Target Details

Target:	PPIE
Alternative Name:	PPIE ( <a href="#">PPIE Products</a> )
Background:	The protein encoded by this gene is a member of the peptidyl-prolyl cis-trans isomerase

## Target Details

(PPIase) family. PPIases catalyze the cis-trans isomerization of proline imidic peptide bonds in oligopeptides and accelerate the folding of proteins. This protein contains a highly conserved cyclophilin (CYP) domain as well as an RNA-binding domain. It was shown to possess PPIase and protein folding activities, and it also exhibits RNA-binding activity. Alternative splicing results in multiple transcript variants. A related pseudogene, which is also located on chromosome 1, has been identified.

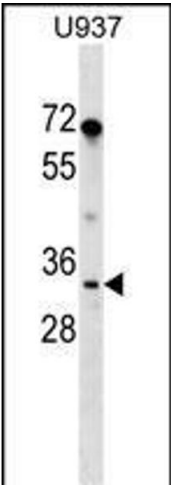
Molecular Weight:	33431
Gene ID:	10450
NCBI Accession:	<a href="#">NP_001181936</a> , <a href="#">NP_006103</a> , <a href="#">NP_982281</a>
UniProt:	<a href="#">Q9UNP9</a>

## Application Details

Application Notes:	WB: 1:1000
Restrictions:	For Research Use only

## Handling

Format:	Liquid
Buffer:	Purified polyclonal antibody supplied in PBS with 0.09 % (W/V) sodium azide.
Preservative:	Sodium azide
Precaution of Use:	This product contains Sodium azide: a POISONOUS AND HAZARDOUS SUBSTANCE which should be handled by trained staff only.
Storage:	4 °C, -20 °C
Storage Comment:	PPIE Antibody (N-term) can be refrigerated at 2-8 °C for up to 6 months. For long term storage, keep at -20 °C.
Expiry Date:	6 months



Western Blotting

**Image 1.** IE Antibody (N-term) (ABIN1539183 and ABIN2849146) western blot analysis in cell line lysates (35 µg/lane). This demonstrates the IE antibody detected the IE protein (arrow).