



[Go to Product page](#)

## Datasheet for ABIN1539190 **anti-gGT6 antibody (N-Term)**

### 1 Image

#### Overview

Quantity:	400 µL
Target:	gGT6
Binding Specificity:	AA 23-49, N-Term
Reactivity:	Human
Host:	Rabbit
Clonality:	Polyclonal
Application:	Western Blotting (WB)

#### Product Details

Immunogen:	This GGT6 antibody is generated from rabbits immunized with a KLH conjugated synthetic peptide between 23-49 amino acids from the N-terminal region of human GGT6.
Clone:	RB37522
Isotype:	Ig Fraction
Purification:	This antibody is purified through a protein A column, followed by peptide affinity purification.

#### Target Details

Target:	gGT6
Alternative Name:	GGT6 ( <a href="#">gGT6 Products</a> )
Background:	GGT6 belongs to the gamma-glutamyltransferase (GGT, EC 2.3.2.2) gene family. GGT is a membrane-bound extracellular enzyme that cleaves gamma-glutamyl peptide bonds in glutathione and other peptides and transfers the gamma-glutamyl moiety to acceptors. GGT is

## Target Details

---

also key to glutathione homeostasis because it provides substrates for glutathione synthesis (Heisterkamp et al., 2008 [PubMed 18357469]).

Molecular Weight: 50509

Gene ID: 124975

NCBI Accession: [NP\\_001116362, NP\\_699169](#)

UniProt: [Q6P531](#)

## Application Details

---

Application Notes: WB: 1:1000

Restrictions: For Research Use only

## Handling

---

Format: Liquid

Buffer: Purified polyclonal antibody supplied in PBS with 0.09 % (W/V) sodium azide.

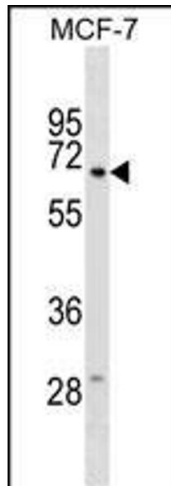
Preservative: Sodium azide

Precaution of Use: This product contains Sodium azide: a POISONOUS AND HAZARDOUS SUBSTANCE which should be handled by trained staff only.

Storage: 4 °C, -20 °C

Storage Comment: GGT6 Antibody (N-term) can be refrigerated at 2-8 °C for up to 6 months. For long term storage, keep at -20 °C.

Expiry Date: 6 months



### Western Blotting

**Image 1.** GGT6 Antibody (N-term) (ABIN1539190 and ABIN2849091) western blot analysis in MCF-7 cell line lysates (35 µg/lane). This demonstrates the GGT6 antibody detected the GGT6 protein (arrow).