

Datasheet for ABIN1539192
anti-MXD1 antibody (N-Term)[Go to Product page](#)

1 Image

Overview

Quantity:	400 µL
Target:	MXD1
Binding Specificity:	AA 23-50, N-Term
Reactivity:	Human
Host:	Rabbit
Clonality:	Polyclonal
Application:	Western Blotting (WB)

Product Details

Immunogen:	This MXD1 antibody is generated from rabbits immunized with a KLH conjugated synthetic peptide between 23-50 amino acids from the N-terminal region of human MXD1.
Clone:	RB36299
Isotype:	Ig Fraction
Purification:	This antibody is purified through a protein A column, followed by peptide affinity purification.

Target Details

Target:	MXD1
Alternative Name:	MXD1 (MXD1 Products)
Background:	MAX dimerization protein belongs to a subfamily of MAX-interacting proteins. This protein competes with MYC for binding to MAX to form a sequence-specific DNA-binding complex, acts as a transcriptional repressor (while MYC appears to function as an activator) and is a

Target Details

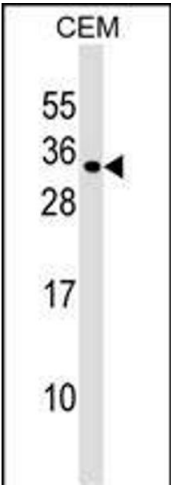
	candidate tumor suppressor. [provided by RefSeq].
Molecular Weight:	25254
Gene ID:	4084
NCBI Accession:	NP_001189442 , NP_001189443 , NP_002348
UniProt:	Q05195

Application Details

Application Notes:	WB: 1:1000
Restrictions:	For Research Use only

Handling

Format:	Liquid
Buffer:	Purified polyclonal antibody supplied in PBS with 0.09 % (W/V) sodium azide.
Preservative:	Sodium azide
Precaution of Use:	This product contains Sodium azide: a POISONOUS AND HAZARDOUS SUBSTANCE which should be handled by trained staff only.
Storage:	4 °C, -20 °C
Storage Comment:	MXD1 Antibody (N-term) can be refrigerated at 2-8 °C for up to 6 months. For long term storage, keep at -20 °C.
Expiry Date:	6 months



Western Blotting

Image 1. MXD1 Antibody (N-term) (ABIN1539192 and ABIN2848800) western blot analysis in CEM cell line lysates (35 µg/lane). This demonstrates the MXD1 antibody detected the MXD1 protein (arrow).