

Datasheet for ABIN1539210  
**anti-NEMF antibody (N-Term)**[Go to Product page](#)

## 1 Image

## Overview

|                      |                       |
|----------------------|-----------------------|
| Quantity:            | 400 µL                |
| Target:              | NEMF (SDCCAG1)        |
| Binding Specificity: | AA 236-264, N-Term    |
| Reactivity:          | Mouse                 |
| Host:                | Rabbit                |
| Clonality:           | Polyclonal            |
| Application:         | Western Blotting (WB) |

## Product Details

|               |  |
|---------------|--|
| Immunogen:    | This Mouse Sdccag1 antibody is generated from rabbits immunized with a KLH conjugated synthetic peptide between 236-264 amino acids from the N-terminal region of mouse Sdccag1. |
| Clone:        | RB40004  |
| Isotype:      | Ig Fraction  |
| Purification: | This antibody is purified through a protein A column, followed by peptide affinity purification.   |

## Target Details

|                   |   |
|-------------------|---|
| Target:           | NEMF (SDCCAG1)  |
| Alternative Name: | Sdccag1 ( <a href="#">SDCCAG1 Products</a> )  |
| Background:       | SDCG1, serologically defined colon cancer antigen 1, belongs to the SDCCAG1 family. 2 isoforms of the human protein are produced by alternative splicing. |

## Target Details

|                   |                           |
|-------------------|---------------------------|
| Molecular Weight: | 121188                    |
| Gene ID:          | 66244                     |
| NCBI Accession:   | <a href="#">NP_079717</a> |
| UniProt:          | <a href="#">Q8CCP0</a>    |

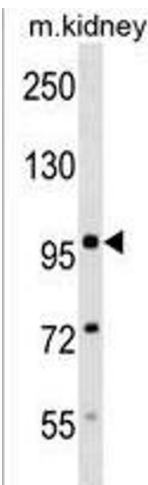
## Application Details

|                    |                       |
|--------------------|-----------------------|
| Application Notes: | WB: 1:1000            |
| Restrictions:      | For Research Use only |

## Handling

|                    |  |
|--------------------|--|
| Format:            | Liquid   |
| Buffer:            | Purified polyclonal antibody supplied in PBS with 0.09 % (W/V) sodium azide.   |
| Preservative:      | Sodium azide   |
| Precaution of Use: | This product contains Sodium azide: a POISONOUS AND HAZARDOUS SUBSTANCE which should be handled by trained staff only.   |
| Storage:           | 4 °C, -20 °C   |
| Storage Comment:   | Mouse Sdccag1 Antibody (N-term) can be refrigerated at 2-8 °C for up to 6 months. For long term storage, keep at -20 °C. |
| Expiry Date:       | 6 months   |

## Images



### Western Blotting

**Image 1.** Mouse Sdccag1 Antibody (N-term) (ABIN1539210 and ABIN2838233) western blot analysis in mouse kidney tissue lysates (35 µg/lane). This demonstrates the Sdccag1 antibody detected the Sdccag1 protein (arrow).