

Datasheet for ABIN1539213  
**anti-GRM7 antibody (N-Term)**[Go to Product page](#)

## 1 Image

## Overview

Quantity:	400 µL
Target:	GRM7
Binding Specificity:	AA 240-269, N-Term
Reactivity:	Human
Host:	Rabbit
Clonality:	Polyclonal
Conjugate:	This GRM7 antibody is un-conjugated
Application:	Western Blotting (WB)

## Product Details

Immunogen:	This GRM7 antibody is generated from rabbits immunized with a KLH conjugated synthetic peptide between 240-269 amino acids from the N-terminal region of human GRM7.
Clone:	RB36657
Isotype:	Ig Fraction
Predicted Reactivity:	M, Rat
Purification:	This antibody is purified through a protein A column, followed by peptide affinity purification.

## Target Details

Target:	GRM7
Alternative Name:	GRM7 ( <a href="#">GRM7 Products</a> )

## Target Details

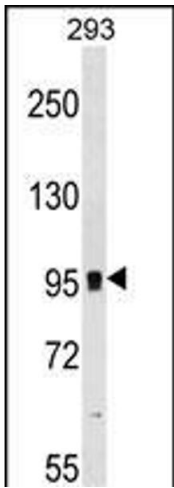
Background:	L-glutamate is the major excitatory neurotransmitter in the central nervous system, and it activates both ionotropic and metabotropic glutamate receptors. Glutamatergic neurotransmission is involved in most aspects of normal brain function and can be perturbed in many neuropathologic conditions. The metabotropic glutamate receptors are a family of G protein-coupled receptors that have been divided into three groups on the basis of sequence homology, putative signal transduction mechanisms, and pharmacologic properties. Group I includes GRM1 and GRM5, and these receptors have been shown to activate phospholipase C. Group II includes GRM2 and GRM3, while Group III includes GRM4, GRM6, GRM7 and GRM8. Group II and III receptors are linked to the inhibition of the cyclic AMP cascade but differ in their agonist selectivities. Multiple transcript variants encoding different isoforms have been found for this gene.
Molecular Weight:	102251
Gene ID:	2917
NCBI Accession:	<a href="#">NP_000835</a> , <a href="#">NP_870989</a>
UniProt:	<a href="#">Q14831</a>
Pathways:	<a href="#">Sensory Perception of Sound</a> , <a href="#">cAMP Metabolic Process</a> , <a href="#">Feeding Behaviour</a>

## Application Details

Application Notes:	WB: 1:1000
Restrictions:	For Research Use only

## Handling

Format:	Liquid
Buffer:	Purified polyclonal antibody supplied in PBS with 0.09 % (W/V) sodium azide.
Preservative:	Sodium azide
Precaution of Use:	This product contains Sodium azide: a POISONOUS AND HAZARDOUS SUBSTANCE which should be handled by trained staff only.
Storage:	4 °C, -20 °C
Storage Comment:	GRM7 Antibody (N-term) can be refrigerated at 2-8 °C for up to 6 months. For long term storage, keep at -20 °C.
Expiry Date:	6 months



Western Blotting

**Image 1.** GRM7 Antibody (N-term) (ABIN1539213 and ABIN2848630) western blot analysis in 293 cell line lysates (35 µg/lane). This demonstrates the GRM7 antibody detected the GRM7 protein (arrow).